

**Lease – From 2,300 SF**

**Sale – Call for Details**

**Warehouse / Office Condos**

**Owner Financing Available**

## **Hartz Building Warehouse / Office**

**1341 Hughes Ford Road, Frederick, Maryland 21701**



**The Hartz Building is located Adjacent to Frederick Airport and contains a mixed use of Warehouse and Office Space. Suites are available with Dock and Drive-In Doors.**

**Join other Tenants: Rehab2 Perform, Tuckers Taekwondo, X Factor Fitness, Dragon Distillery, That Auto Shop, and Bay Runner Shuttle.**

**Located Directly Across from Frederick Municipal Airport in Frederick's HUB Zone.**

**Contact Listing Agent for Pricing Information**

---

All information deemed reliable, but not guaranteed

FOR ADDITIONAL INFORMATION CONTACT:

**Nancy Green – 301-748-3321**

Email: [Nancy@ngreen.com](mailto:Nancy@ngreen.com)

Website: <http://www.ngreen.com>

**Mackintosh Commercial Brokerage**

262 W. Patrick Street

Frederick, Maryland 21701

Broker: 1-800-727-SOLD

Fax #: 1240-489-7932

# Hartz Building - Photos



**Front of Building**



**Drive-In Doors**



**Dock Doors**



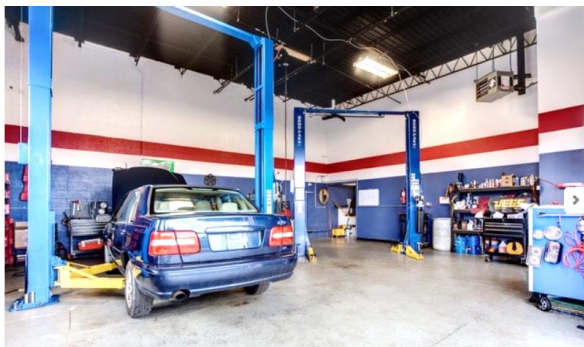
**Side Entrance**



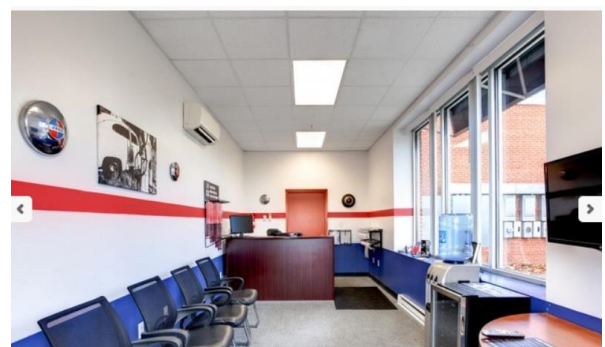
**Distillery Warehouse**



**GYM Interior**



**That Auto Shop Warehouse**



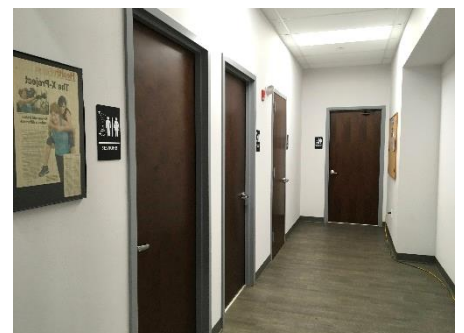
**That Auto Shop Waiting Room**



**Office Suite**



**Windowed Office Suite**

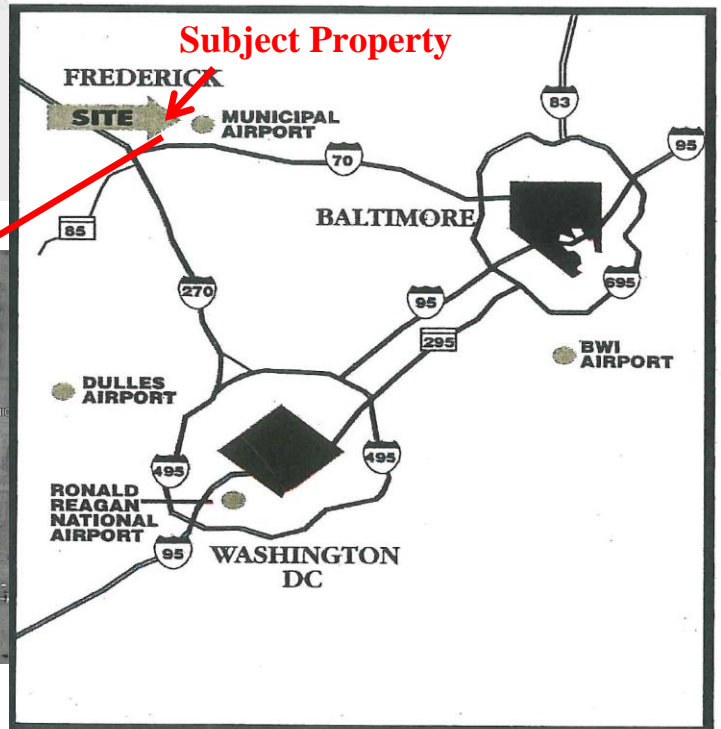
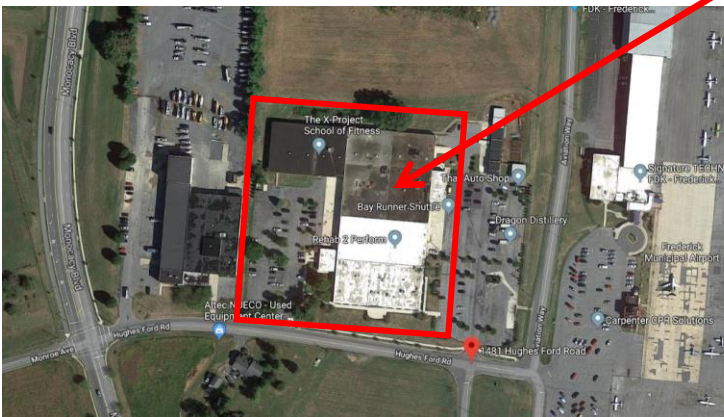
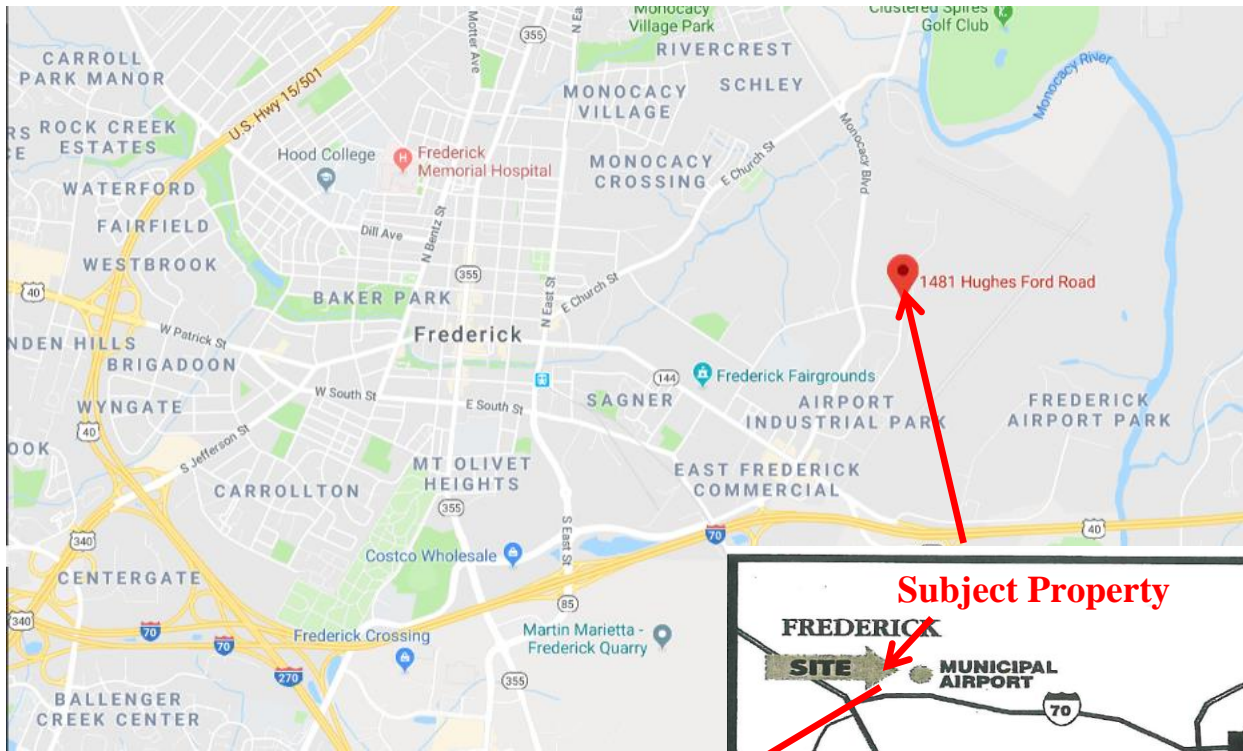


**Restrooms and Showers**

All information deemed reliable, but not guaranteed

## Hartz Building Directions:

From the I-70 and I-270 Intersection in Frederick, Drive East on I-70 E. Take Exit 55 toward South St/Fairgrounds. Turn Right onto East South Street. Turn Right at the first cross street onto Monocacy. Turn Right onto Hughes Ford Road to Property on Left at 1481 Hughes Ford Road.



All information deemed reliable, but not guaranteed

FOR ADDITIONAL INFORMATION CONTACT:

**Nancy Green – 301-748-3321**

Email: [Nancy@ngreen.com](mailto:Nancy@ngreen.com)

Website: <http://www.ngreen.com>

**Mackintosh Commercial Brokerage**

262 W. Patrick Street

Frederick, Maryland 21701

Broker: 1-800-727-SOLD

Fax #: 1240-489-7932