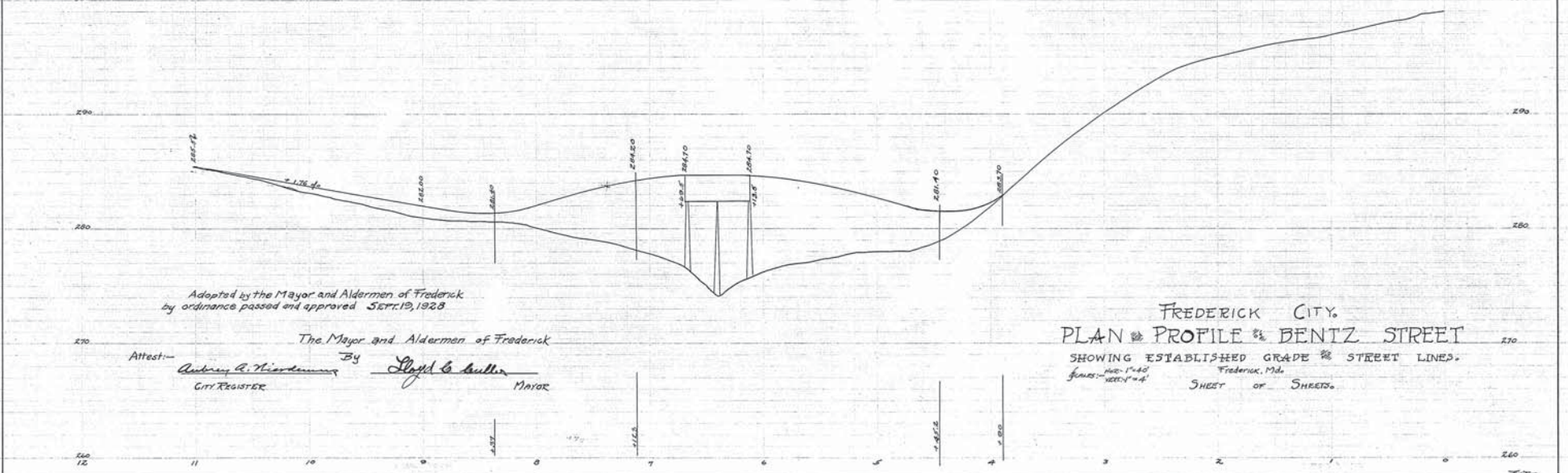
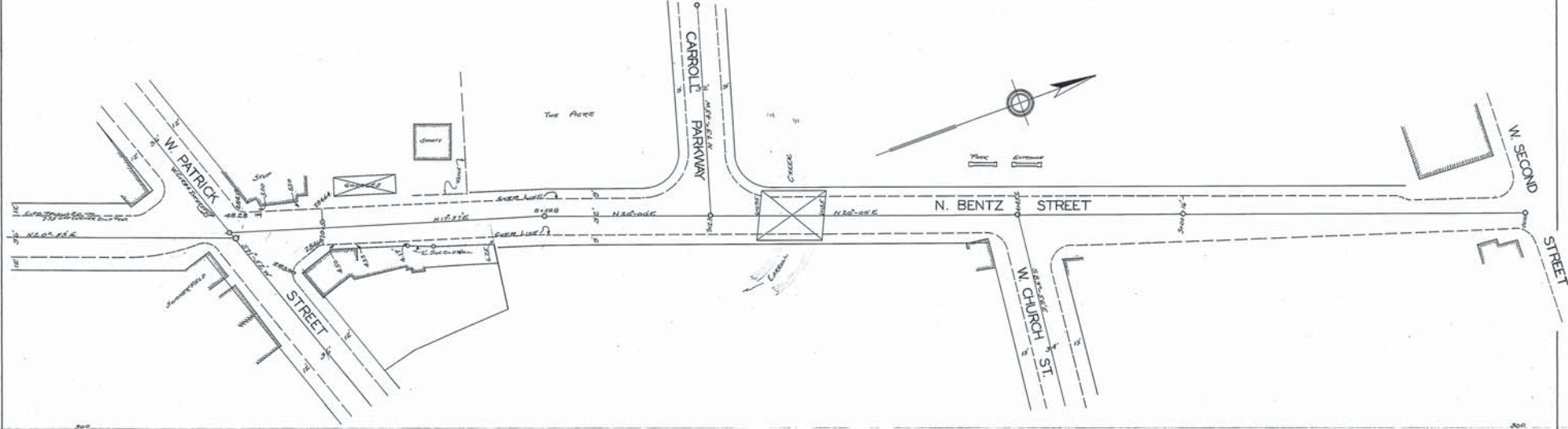


ELMER S. MAXWELL  
CITY ENGINEER  
FREDERICK, MARYLAND



Adopted by the Mayor and Aldermen of Frederick  
by ordinance passed and approved 5 OCT. 19, 1928

The Mayor and Aldermen of Frederick  
 Attest: Anthony C. Nordmann By Lloyd C. Buller  
 City Register Mayor

FREDERICK CITY  
 PLAN & PROFILE OF BENTZ STREET  
 SHOWING ESTABLISHED GRADE & STREET LINES.  
 SCALE: HORIZ. 1"=40' VERT. 1"=4'  
 Frederick, Md.  
 SHEET OF SHEETS.