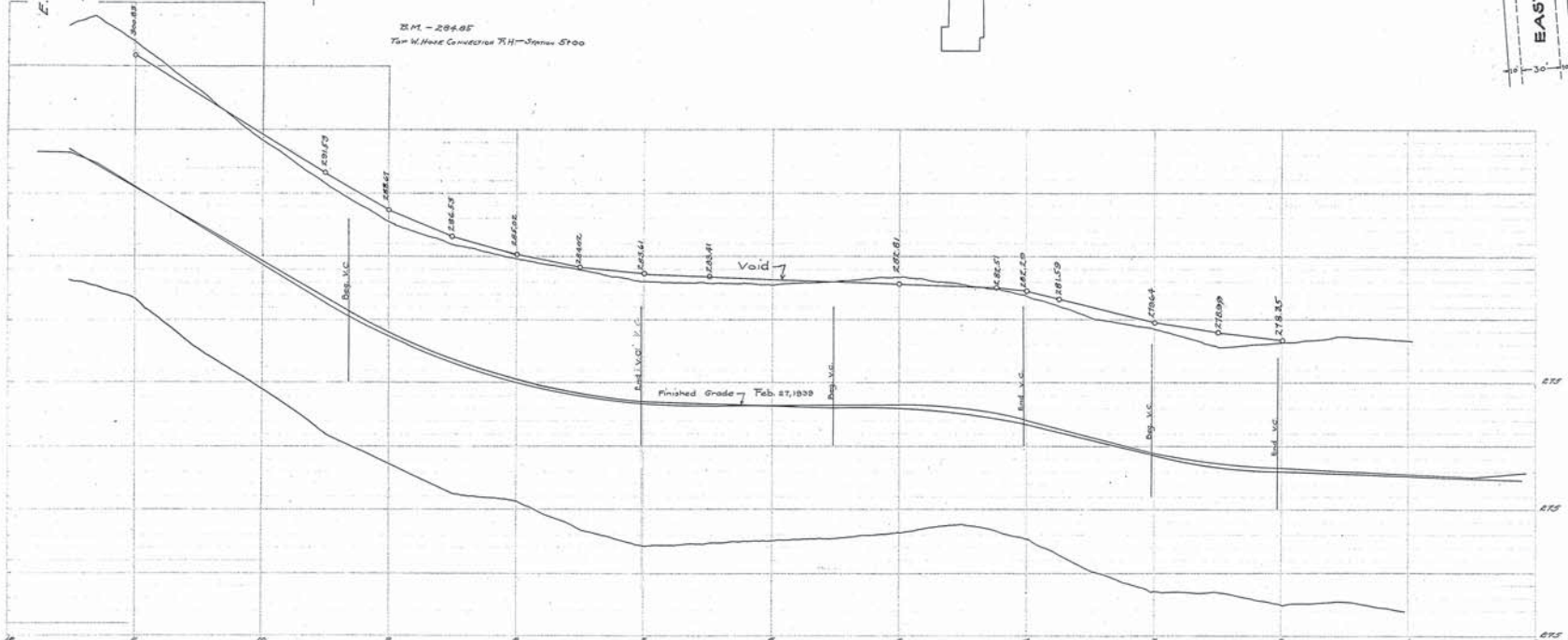
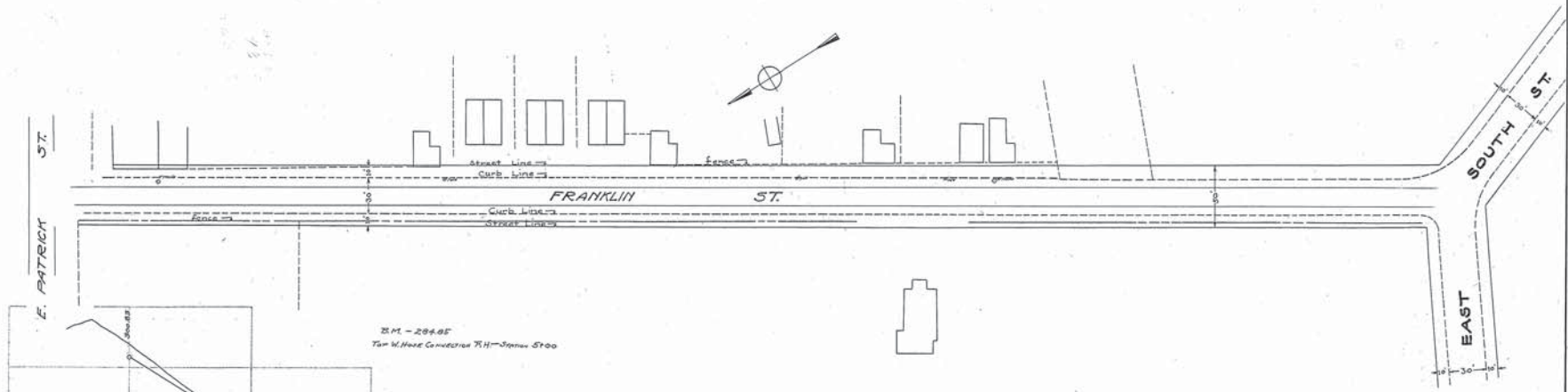


EMORY CRUM
CITY ENGINEER
FREDERICK-MARYLAND



Adopted by the Mayor and Aldermen of Frederick
by ordinance passed and approved, Sept. 19, 1928

Attest:-
The Mayor and Aldermen of Frederick
By *John C. Buller*
City Registrar Mayor

FREDERICK CITY
PLAN & PROFILE OF FRANKLIN STREET
SHOWING ESTABLISHED GRADE & STREET LINE
Scale: 1" = 10' Vert. 1" = 100' Hor.
Frederick, Md.
Sheet 1 of 1 Sheet

No. 250518
P.L.C.

PLAN & PROFILE

FRANKLIN STREET

250518