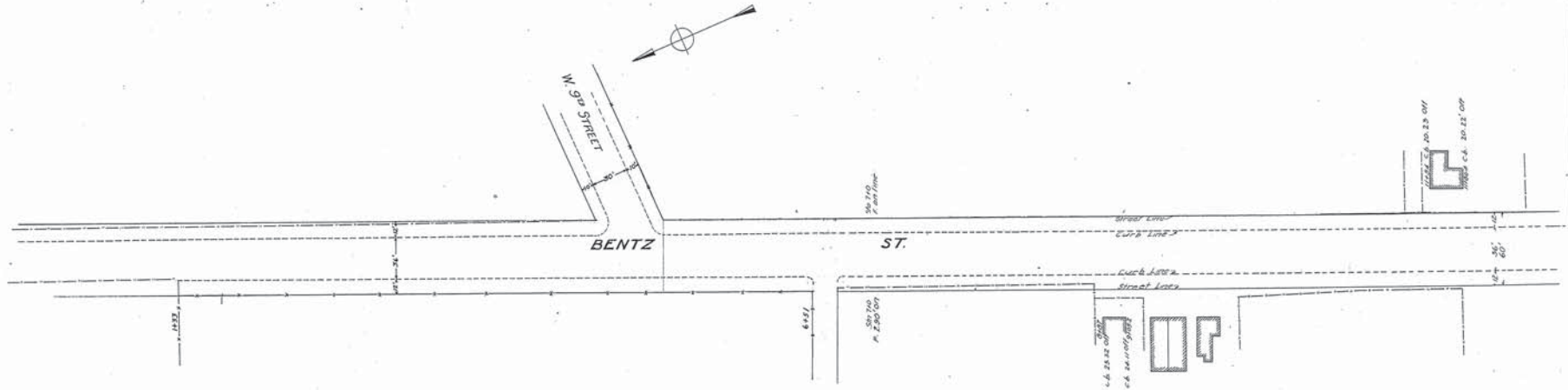
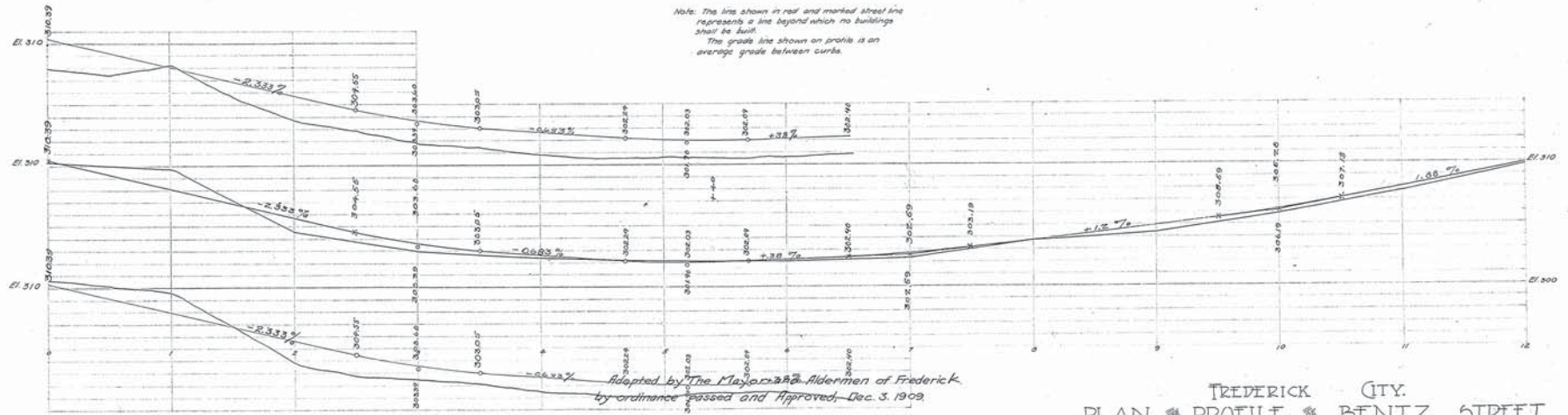


WESTINGHOUSE, CHURCH, KERR & Co.
ENGINEERS.
8 & 10 BRIDGE ST. NEW YORK.

Drawn by J.R. & A.C.
Checked by G.A. & C.A. (1)



AMENDED BY ORDINANCE PASSED AND APPROVED
AUGUST 6, 1930
THE MAYOR & ALDERMEN OF FREDERICK
ATTEST-
Anthony A. Heisterkamp City Register
Steph. C. Buller Mayor



Adopted by The Mayor and Aldermen of Frederick
by ordinance passed and Approved, Dec. 3, 1909.

Attest-
M.A. McCaffrey City Register
The Mayor and Aldermen of Frederick
By *Geo. Edw. Smith* Mayor

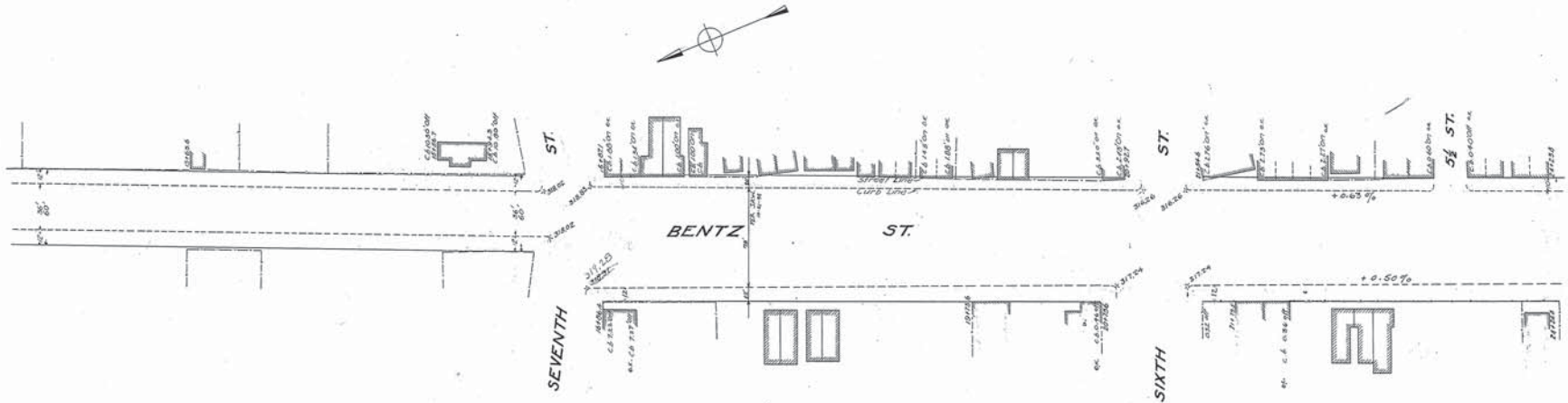
FREDERICK CITY.
PLAN & PROFILE OF BENTZ STREET.
SHOWING ESTABLISHED GRADE OF STREET LINE.
Scales: 1/4" = 1' Vert. 1" = 40' Hor.
Frederick Md. Jan. 31-1908.
Sheet 1 of 6 Sheets.

N. Y. No. 20474

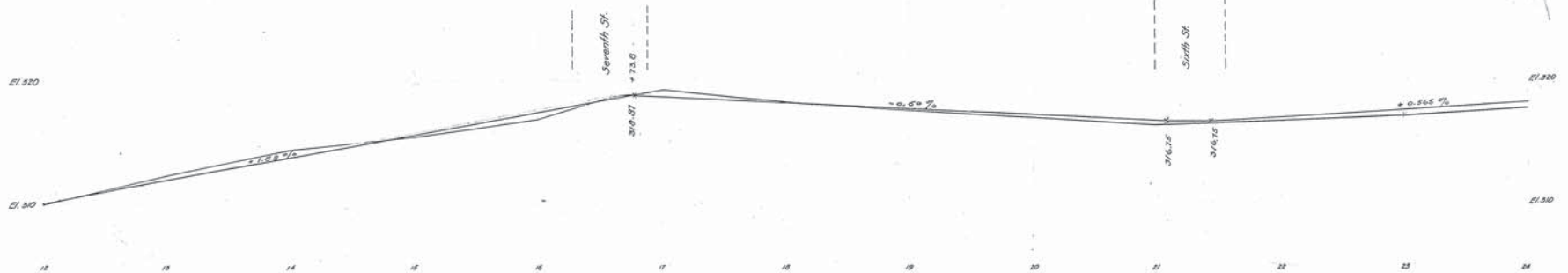
WESTINGHOUSE CHURCH, KERR & CO. 20474
BENTZ STREET

WESTINGHOUSE, GEORGE KERR & Co.
ENGINEERS
6 & 10 BRIDGE ST., NEW YORK.

Drawn by J.O. & R.O.
Checked by H.E. & J.R.



Note: The line shown in red and marked street line represents a line beyond which no buildings shall be built.
The grade line shown on profile is an average grade between curbs.



Adopted by The Mayor and Aldermen of Frederick,
by ordinance passed and approved Dec. 3, 1909.

Attest
M. A. McCaffrey
City Registrar

The Mayor and Aldermen of Frederick,
By *Geo. Edw. Smith* Mayor.

FREDERICK CITY.
PLAN & PROFILE OF BENTZ STREET.
SHOWING ESTABLISHED GRADE & STREET LINE.
Scale: 1" = 40' Vert.
1" = 40' Hor.
Frederick Md.
Sheet 2 of 6 Sheets.

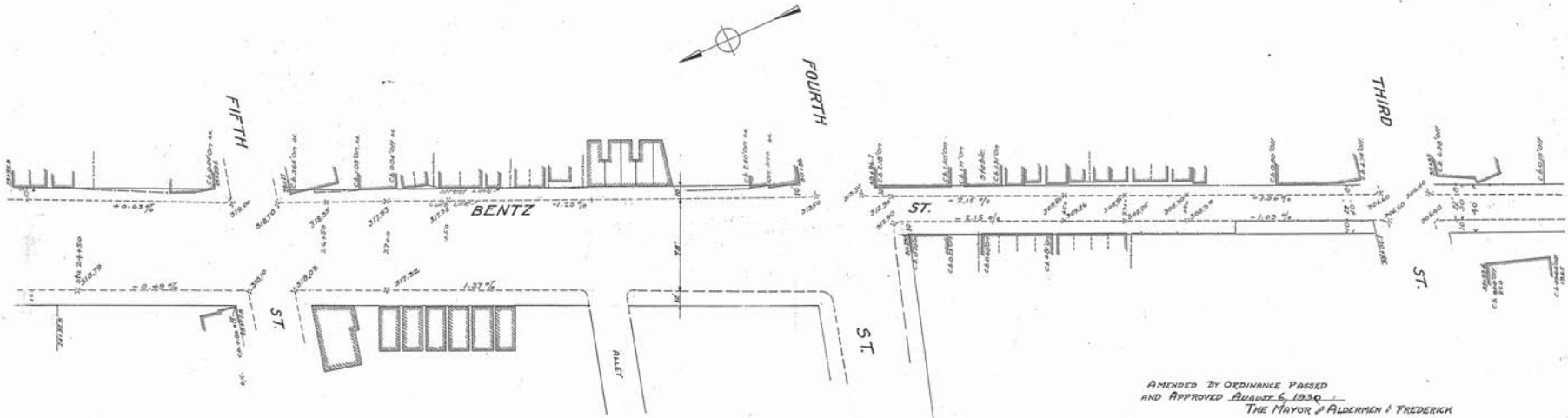
Jan 31-1906.
April 8-1909.
N. Y. No 20475.

WESTINGHOUSE CHURCH, KERR & CO.

BENTZ STREET

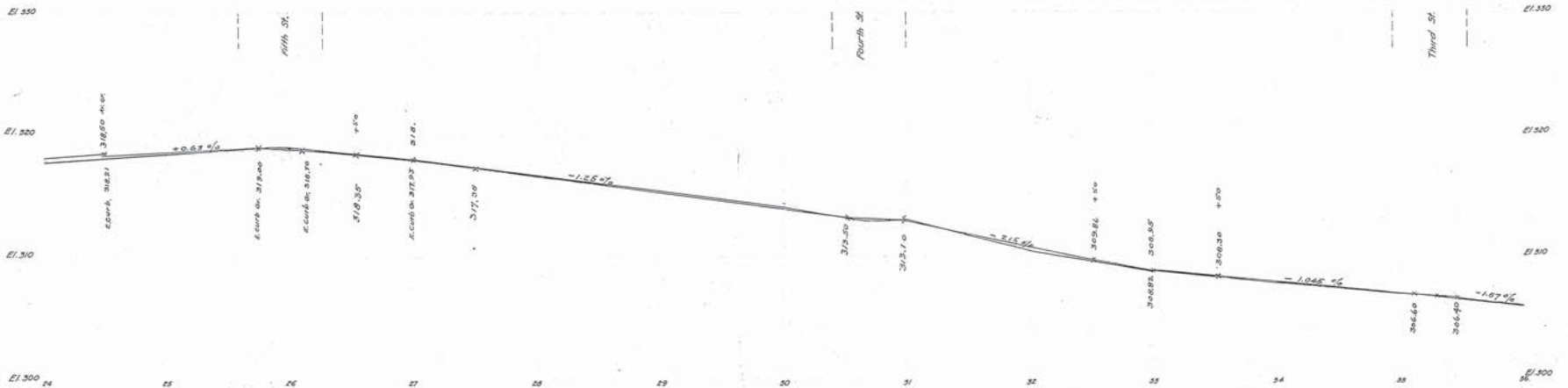
WESTINGHOUSE, CHURCH, KERR & Co.
ENGINEERS.
6 & 10 BRIDGE ST. NEW YORK.

Drawn by J.G. & G.C.
Checked by H.C. & J.R.



Note: The line shown in red and marked street line represents a line beyond which no buildings shall be built.
The grade line shown on profile is an average grade between curbs.

AMENDED BY ORDINANCE PASSED
AND APPROVED AUGUST 6, 1930
THE MAYOR & ALDERMEN OF FREDERICK
ATTEST:-
Arthur W. Henderson City Register
Steph C. Culler Mayor



Adopted by The Mayor and Aldermen of Frederick,
by ordinance passed and approved Dec. 3, 1909.

Attest:-
M.A. McGaffrey
City Register

The Mayor and Aldermen of Frederick.
BY
Geo. Edwin Smith Mayor.

FREDERICK CITY.
PLAN & PROFILE OF BENTZ STREET.
SHOWING ESTABLISHED GRADE & STREET LINE.
Frederick Md.
Jan 31-1906.
April 8-1909
Sheet 3 of 6 Sheets

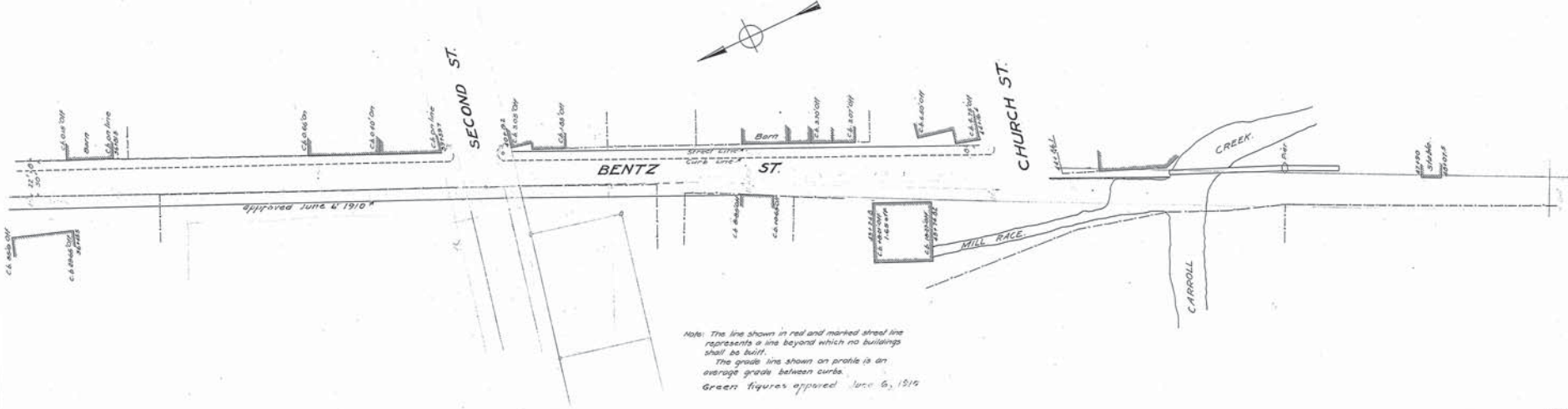
N. Y. No 20476

WESTINGHOUSE CHURCH, KERR & CO.

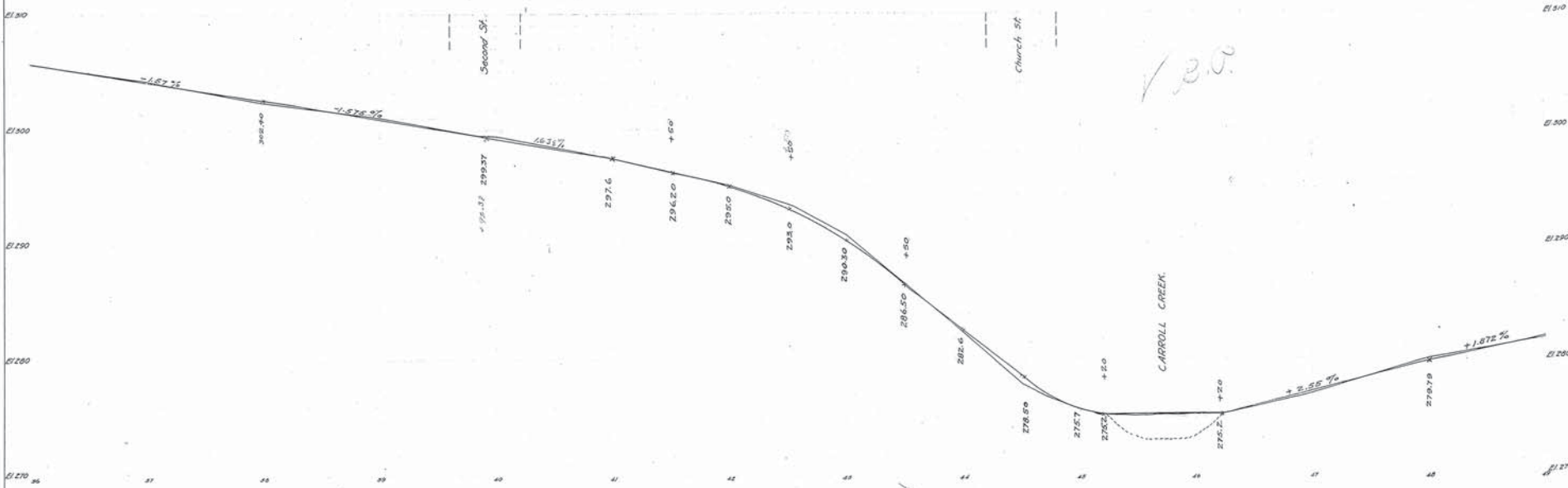
BENTZ STREET

P. 6 - P. 1

WESTINGHOUSE, CHURCH, KERR, & Co.
ENGINEERS
6 & 10 BRIDGE ST. NEW YORK.



Note: The line shown in red and marked street line represents a line beyond which no buildings shall be built.
The grade line shown on profile is an average grade between curbs.
Green figures appeared June 6, 1910



Repealed and reenacted by ordinance
passed and approved June 6, 1910

Adopted by The Mayor and Aldermen of Frederick
by ordinance passed and approved Dec. 3, 1909.

Attest:
The Mayor and Aldermen of Frederick
By *W. A. McCaffrey*
City Registrar

Attest:-
The Mayor and Aldermen of Frederick
By *W. A. McCaffrey*
City Registrar

FREDERICK CITY.
PLAN & PROFILE BENTZ STREET.

SHOWING ESTABLISHED GRADE & STREET LINE.
Scale: 1" = 40' Vert.
1" = 40' Hor.
Frederick Md.
Jan. 31-1908.
Sheet 4 of 6 Sheets.

WESTINGHOUSE CHURCH, KERR & CO. 20477

BENTZ STREET

