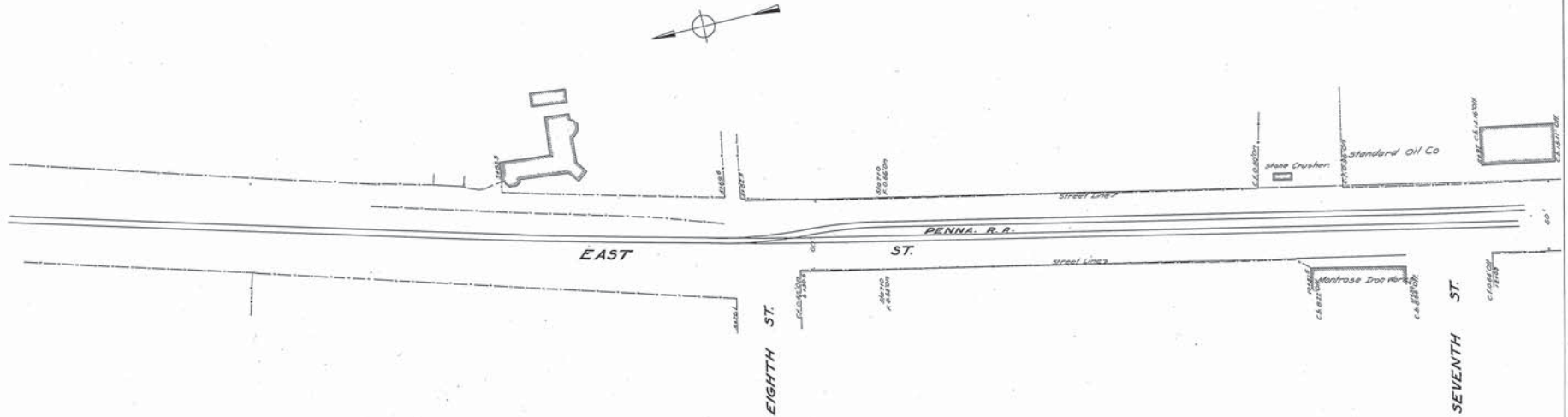


WESTINGHOUSE CHURCH KERR & Co
ENGINEERS
8 & 10 BRIDGE ST. NEW YORK.

Drawn by J. GOOD
Checked by A. C. BEE



Note: The line shown in red and marked street line represents a line beyond which no buildings shall be built.
The grade line shown on profile is an average grade between curbs.



Adopted by The Mayor and Aldermen of Frederick
by ordinance passed and approved Dec. 3, 1909.

Attest-
W. A. McCaffrey
City Registrar

The Mayor and Aldermen of Frederick
By *W. C. Edwards* Mayor

FREDERICK CITY.
PLAN and PROFILE of EAST STREET.
SHOWING ESTABLISHED GRADE of STREET LINE
Scales: 1" = 40 feet
Frederick Md. Oct 16 1907.
Sheet 1 of 4 Sheets

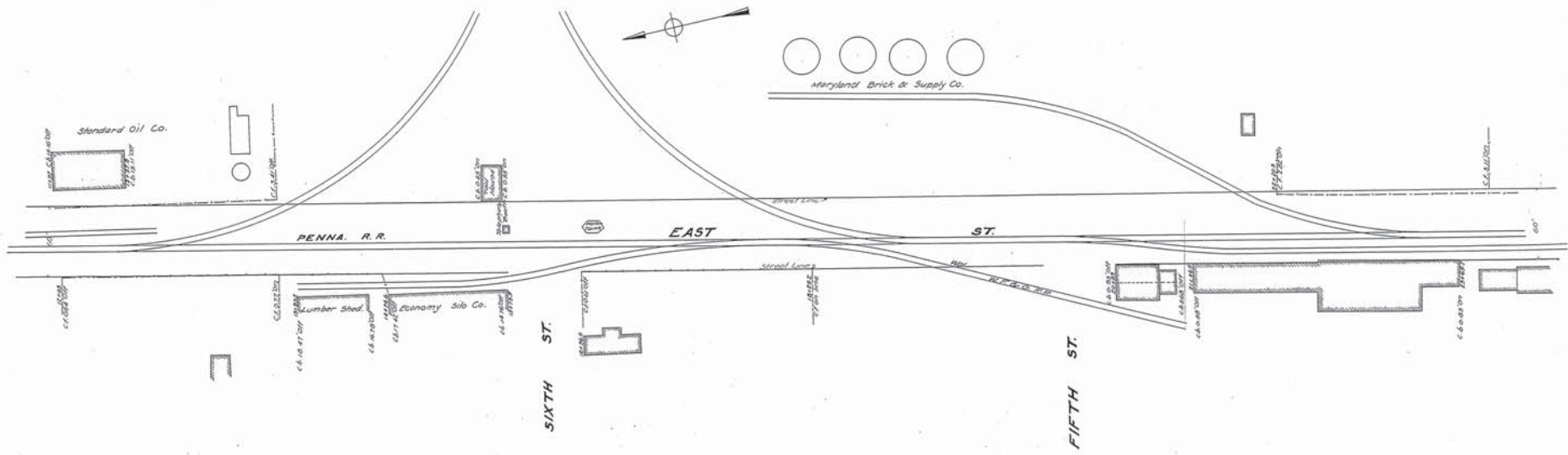
N. Y. No 20041

WESTINGHOUSE CHURCH, KERR & CO. 20041

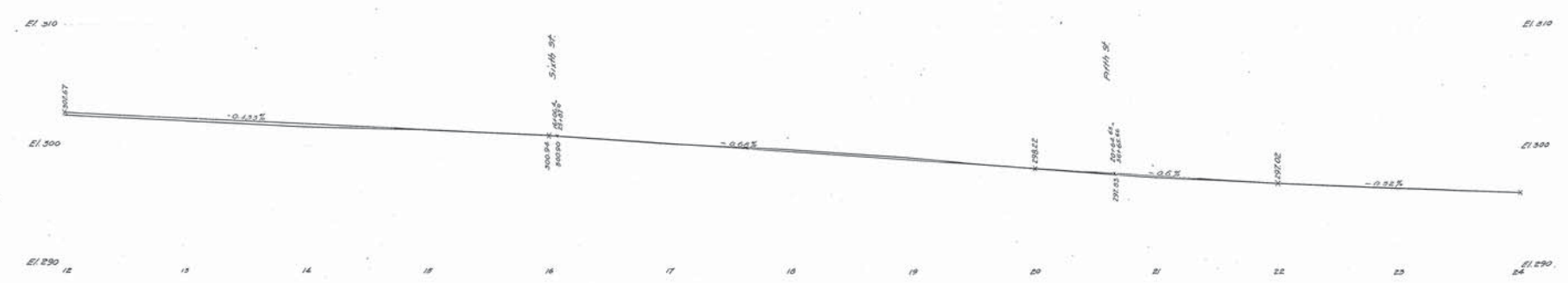
EAST STREET

WESTINGHOUSE CHURCH KERR & Co.
ENGINEERS
6 & 10 BRIDGE ST. NEW YORK.

Drawn by J.O. & R.C.
Checked by P.H.A. 2



Note: The line shown in red and marked street line represents a line beyond which no buildings shall be built.
The grade line shown on profile is an average grade between curbs.



Adopted by The Mayor and Aldermen of Frederick
by ordinance passed and approved Dec. 3, 1909.

Attest:
M. A. M. Caffery
City Registrar

The Mayor and Aldermen of Frederick,
By Geo. Edwin Smith Mayor.

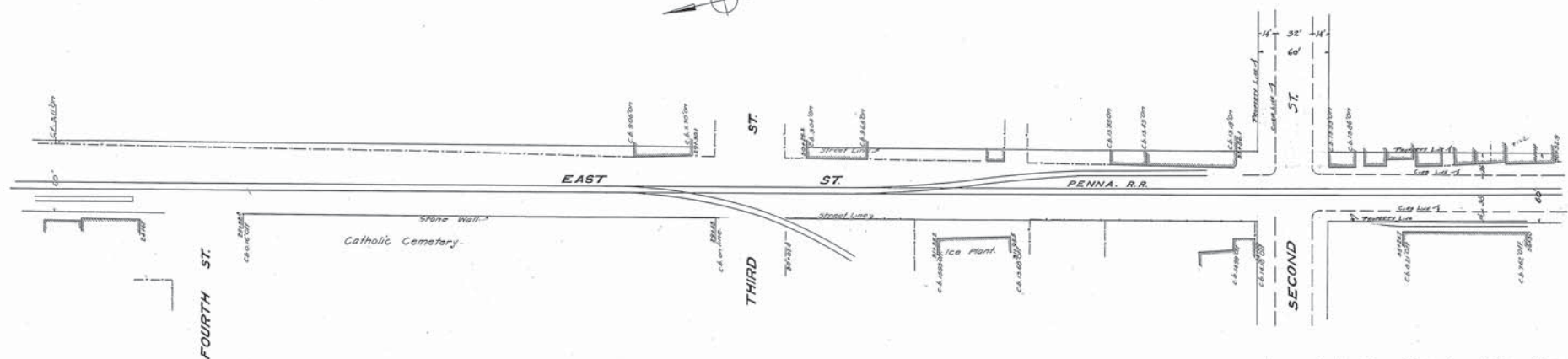
FREDERICK CITY.
PLAN & PROFILE OF EAST STREET.

SHOWING ESTABLISHED GRADE OF STREET LINE.
Scales: 1" = 40' Vert. Frederick Md. Oct 10 1907.
Sheet 2 of 4 Sheets

WESTINGHOUSE CHURCH KERR & Co.
ENGINEERS
6 & 10 BRIDGE ST. NEW YORK

Drawn by J.Q. & H.C.
Checked by

3



Location of Gas Lines Between E. Church St. and E. Second St.
Approved By The Mayor and Aldermen of Frederick By
Ordinance Passed and Approved June 15, 1923

ATTEST -
Anthony B. Henderson BY *Charles H. Henderson*
CITY REGISTER THE Mayor and Aldermen of Frederick
THREE

Note: The line shown in red and marked street line
represents a line beyond which no buildings
shall be built.
The grade line shown on profile is an
average grade between curbs.



Adopted by The Mayor and Aldermen of Frederick.
by ordinance passed and approved Dec. 3, 1909.

Attest -
M.A. McCaffrey
City Registrar

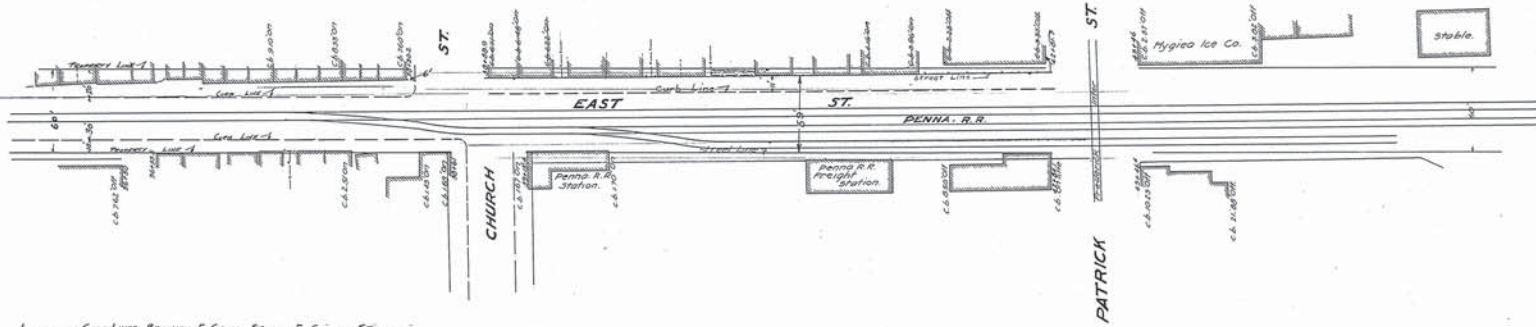
The Mayor and Aldermen of Frederick
BY *Wes. Edw. Smith* Mayor.

FREDERICK CITY.
PLAN & PROFILE OF EAST STREET.
SHOWING ESTABLISHED GRADE AND STREET LINE.
Scale: 1" = 20' H. Frederick Md. Oct 10 1907
Sheet 3 of 4 Sheets.

N.Y. No 20043
P-6-P1

WESTINGHOUSE CHURCH KERR & Co.
ENGINEERS
6 & 10 BRIDGE ST. NEW YORK

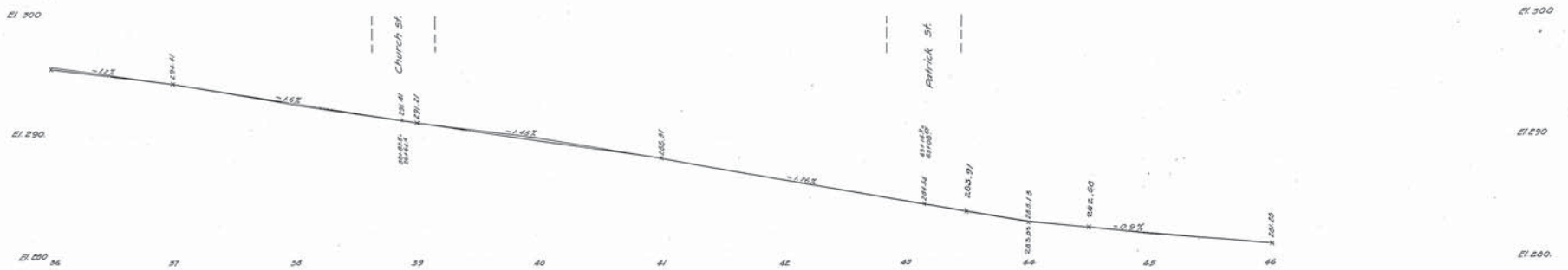
Drawn by J.C. & P.C.
Checked by M. & V.C.



Location of CURB LINES BETWEEN E. Church St. and E. Second Street
APPROVED BY THE MAYOR AND ALDERMEN OF FREDERICK BY
ORDINANCE PASSED AND APPROVED June 15, 1933

Attest:—
Anthony A. ... City Register
By *...* Mayor

Note: The line shown in red and marked street line
represents a line beyond which no buildings
shall be built.
The grade line shown on profile is an
average grade between curbs.



Adopted by The Mayor and Aldermen of Frederick,
by ordinance passed and approved Dec. 3, 1909.

Attest:—
M. W. McCaffrey
City Register

The Mayor and Aldermen of Frederick,
By *J. W. Edwards* Mayor.

FREDERICK CITY.
PLAN & PROFILE OF EAST STREET.

SHOWING ESTABLISHED GRADE OF STREET LINE.
Scale: 1" = 20' H. 1" = 40' V.
Frederick Md. Oct 15 1907.

Sheet 4 of 4 Sheets.

N. Y. No 20044

P.L.-P.1

20044

WESTINGHOUSE CHURCH, KERR & CO.

EAST STREET