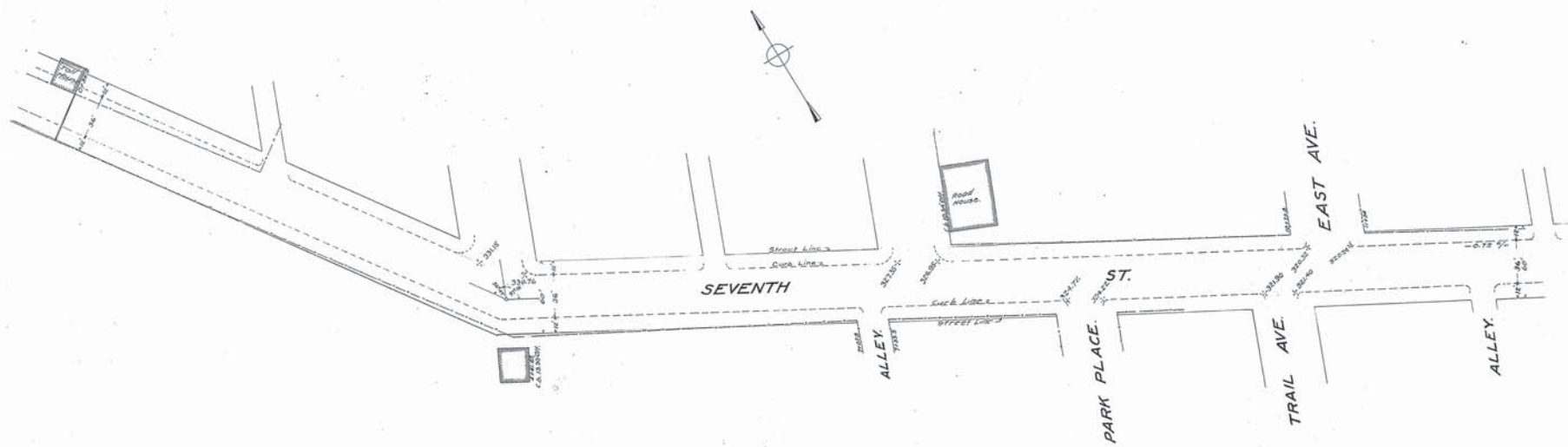


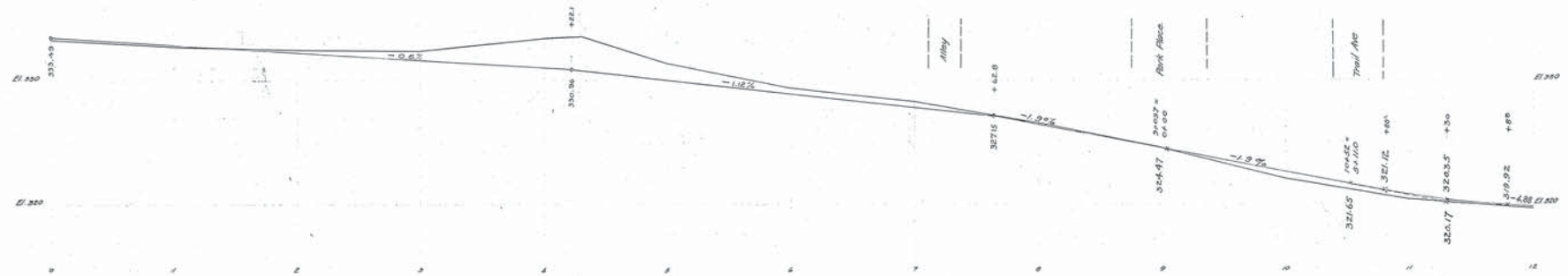
WESTINGHOUSE, GEORGE, KERR & Co.
ENGINEERS.
6 & 10 BRIDGE ST., NEW YORK.

Drawn by J.G. & P.C.
Checked by H.L. & J.D.

1



Note: The line shown in red and marked street line represents a line beyond which no buildings shall be built.
The grade line shown on profile is an average grade between curbs.



Adopted by The Mayor and Aldermen of Frederick
by ordinance passed and approved Dec. 3, 1909.

Attest: *M. A. McCaffrey*
City Registrar

The Mayor and Aldermen of Frederick
By *Wm. E. Smith* Mayor

FREDERICK CITY.
PLAN & PROFILE OF SEVENTH STREET.

SHOWING ESTABLISHED GRADE & STREET LINE.
Scale: 1" = 40' Vert. Frederick Md. Sept 24 1907.
Sheet 1 of 3 Sheets.

N.Y. No. 19838.

P-6-P-1

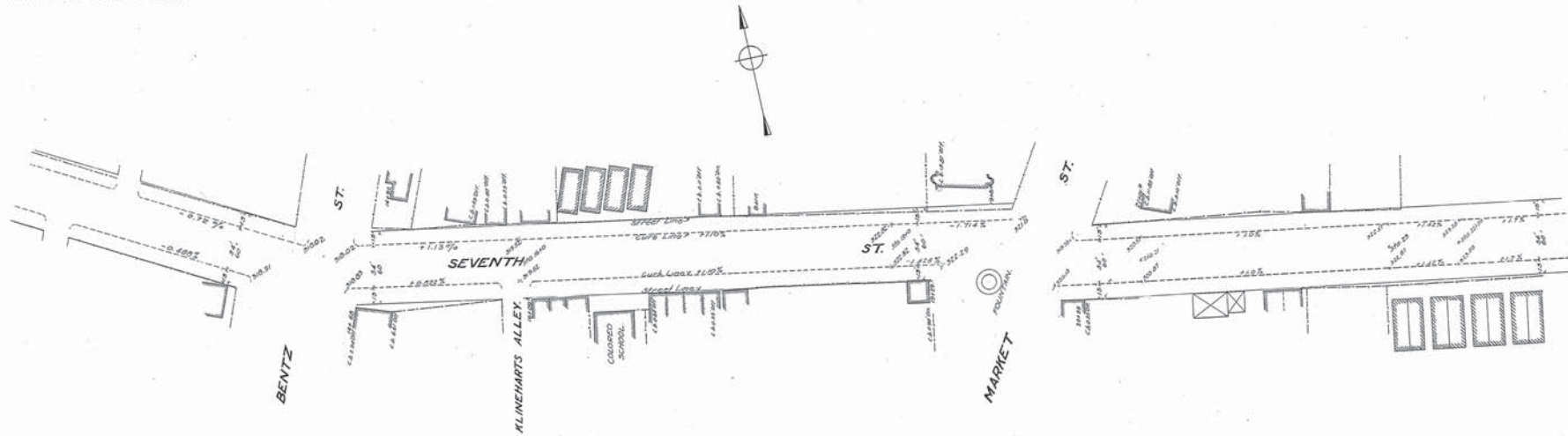
WESTINGHOUSE CHURCH, KERR & CO.

7TH STREET

WESTINGHOUSE, CHURCH, KERR & Co
ENGINEERS
8 & 10 BRIDGE ST. NEW YORK.

Drawn by J.O.P.C.
Checked by J.O.

2



Note: The line shown in red and marked street line
represents a line beyond which no buildings
shall be built.
The grade line shown on profile is an
average grade between curbs.



Adopted by The Mayor and Aldermen of Frederick
by ordinance passed and approved Dec. 3, 1909

Attest:-
M.A. McCaffrey
City Registrar

The Mayor and Aldermen of Frederick
By
Geo. Edwin Smith Mayor

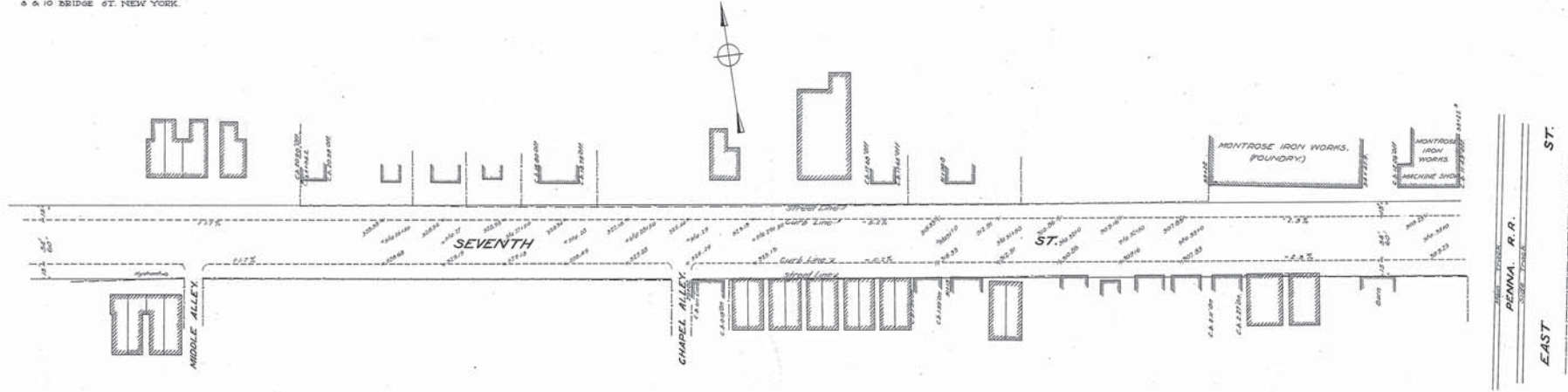
FREDERICK CITY
PLAN & PROFILE OF SEVENTH STREET.
SHOWING ESTABLISHED GRADE & STREET LINE.
Frederick Md. Sept. 24, 1907.
Sheet 2 of 3 Sheets.

N. Y. No. 19839.

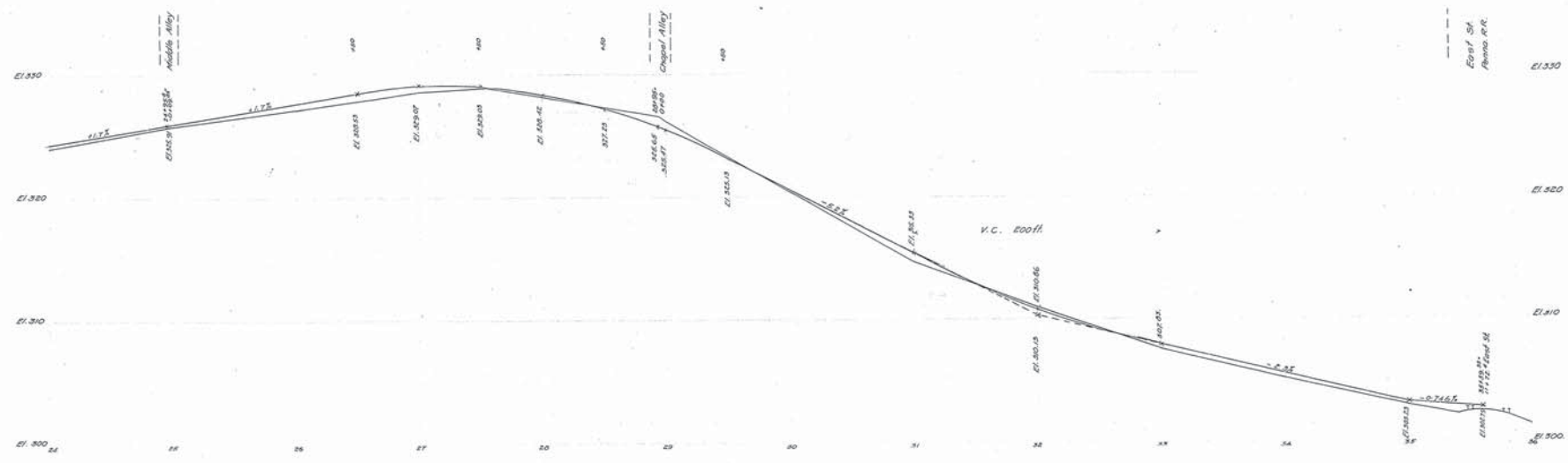
P. 6-F-1

WESTINGHOUSE CHURCH KERR & Co.
ENGINEERS
6 & 10 BRIDGE ST. NEW YORK.

Drawn by J. G. & M.
Checked by D. J. P. (3)



Note: The line shown in red and marked street line
represents a line beyond which no buildings
shall be built.
The grade line shown on profile is an
average grade between curbs.



Adopted by The Mayor and Aldermen of Frederick
by ordinance passed and approved Dec. 3, 1909.

Attest:-
M. A. McCaffrey
City Registrar.
The Mayor and Aldermen of Frederick
Edo Smith Mayor.

FREDERICK CITY
PLAN & PROFILE OF SEVENTH STREET.
SHOWING ESTABLISHED GRADE & STREET LINE.
Frederick Md. Dec. 11, 1907.
Sheet 3 of 3 Sheets.

N. Y. N. 19840.