

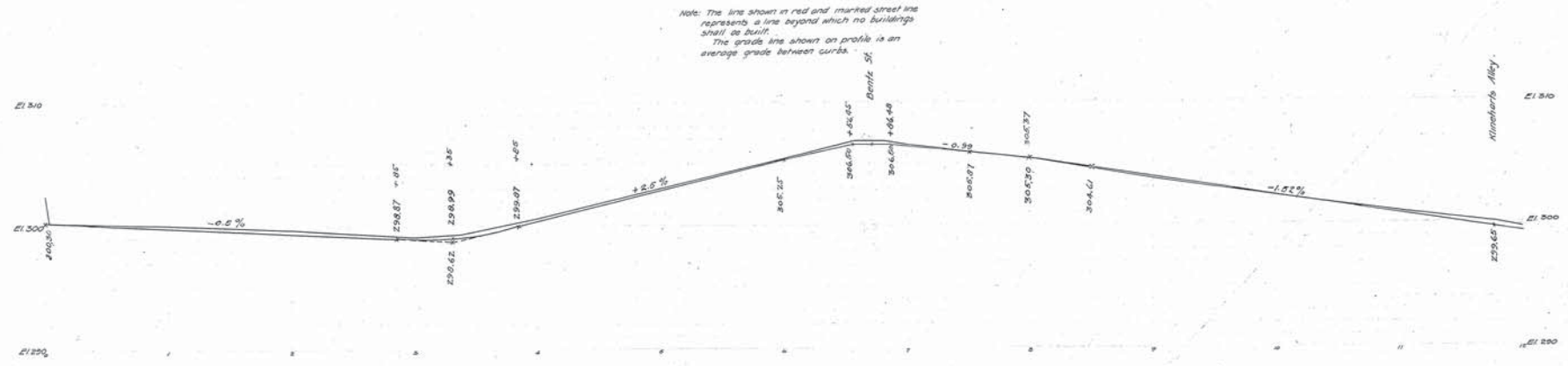
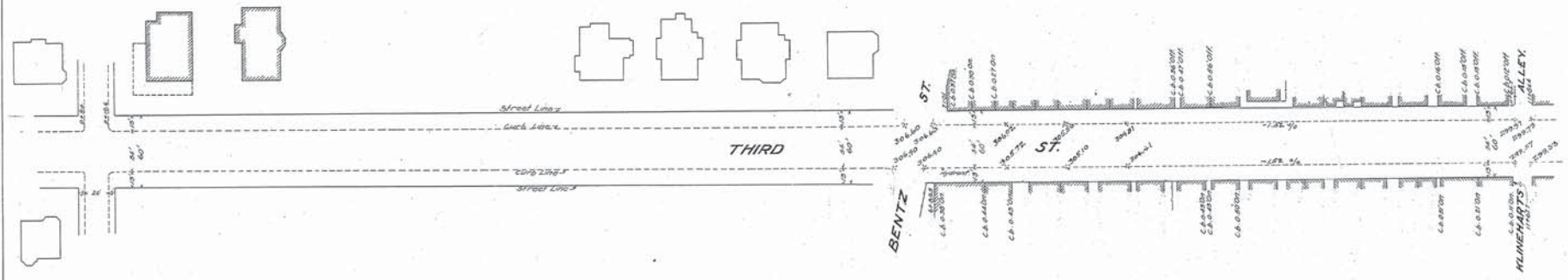
WESTINGHOUSE CHURCH, KERR & CO.

3 RD. STREET

19830

WESTINGHOUSE CHURCH KERR & Co.
ENGINEERS
8 & 10 BRIDGE ST. NEW YORK

Drawn by B.C.
Checked by T.G.R. ①



Adopted by The Mayor and Aldermen of Frederick
by ordinance passed and approved Dec. 3, 1909.

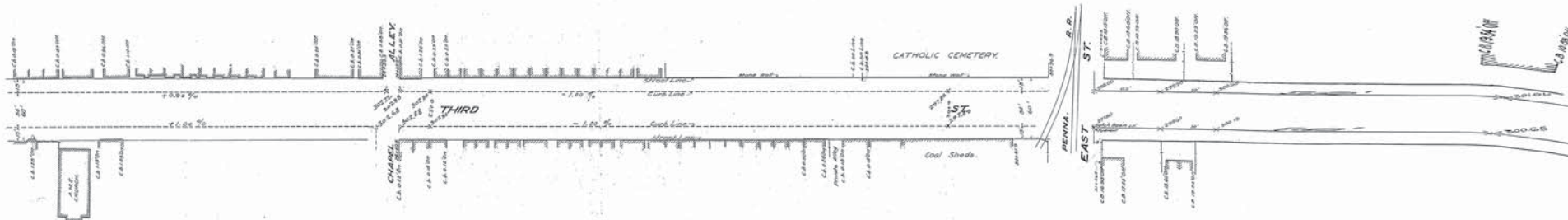
Attest-
M. A. McCaffrey
City Registrar.

The Mayor and Aldermen of Frederick.
Geo. Edwin Smith Mayor.

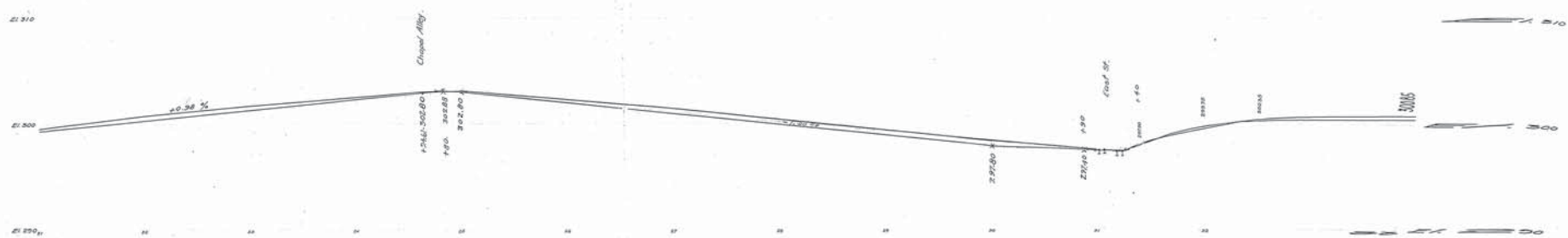
FREDERICK CITY
PLAN & PROFILE OF THIRD STREET
SHOWING ESTABLISHED GRADE & STREET LINE
Scale 1" = 40' Vert.
1" = 40' Hor.
Frederick Md. Sept. 16 1907
Sheet 1 of 4 Sheets
N.Y. No. 19830

P.L.P.

WESTINGHOUSE CHURCH KERR & CO.
ENGINEERS
30 N. 4th AVENUE ST. NEW YORK



Note: The line shown in red and marked street line represents a line beyond which no buildings shall be built.
The grade line shown on profile is an average grade between curbs.



Adopted by The Mayor and Aldermen of Frederick,
by ordinance passed and approved Dec. 3, 1909

Attest:
M. A. McCaffrey
City Registrar

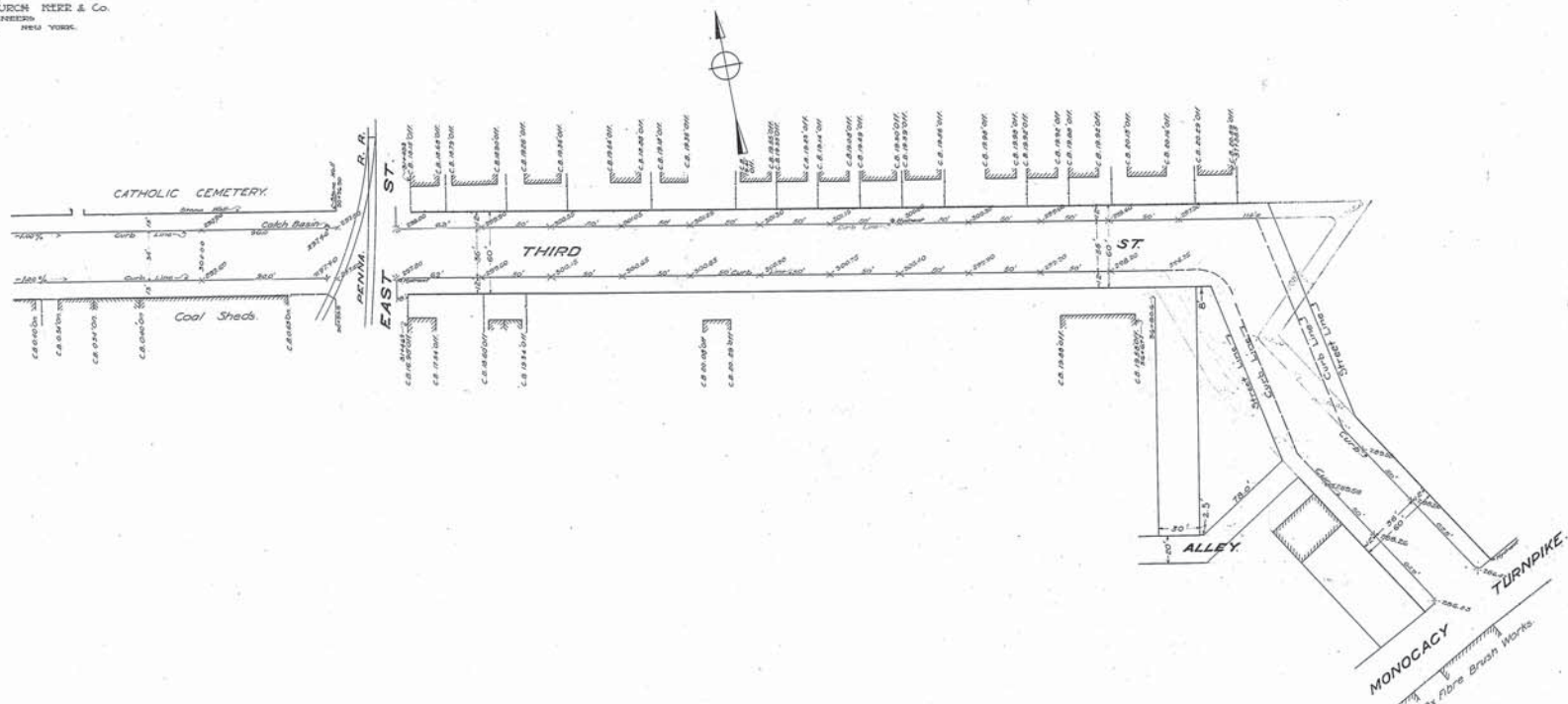
The Mayor and Aldermen of Frederick
By *Edw. Smith* Mayor.

FREDERICK CITY
PLAN & PROFILE - THIRD STREET
SHOWING ESTABLISHED GRADE & STREET LINE
Frederick Md.
Sheet 3 of 4 Sheets
N. Y. N. O. 19832

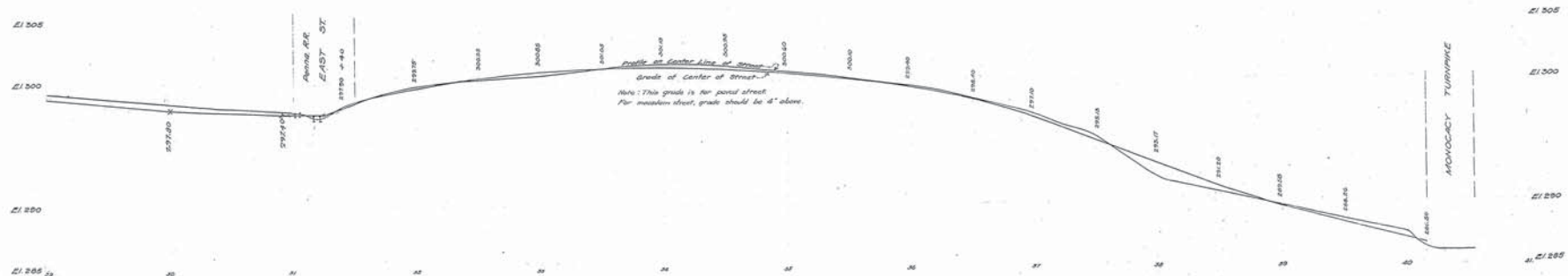
WESTINGHOUSE CHURCH, KERR & Co.
ENGINEERS
6 & 10 BRUDER ST. NEW YORK.

Drawn by [Signature]
checked [Signature]

4



Note: The line shown in red and marked street line represents a line beyond which no buildings shall be built.
The grade line shown on profile is an average grade between curbs.



Adopted by The Mayor and Aldermen of Frederick,
by ordinance passed and approved Dec. 3, 1909

Attest:
[Signature]
City Registrar

The Mayor and Aldermen of Frederick
By: [Signature]
Mayor

FREDERICK CITY
PLAN & PROFILE OF THIRD STREET
SHOWING ESTABLISHED GRADE & STREET LINE
Frederick Md.
Sept. 11 1907
Sheet 4 of 4 Sheets

N. Y. No. 19833

P. 6-F-1