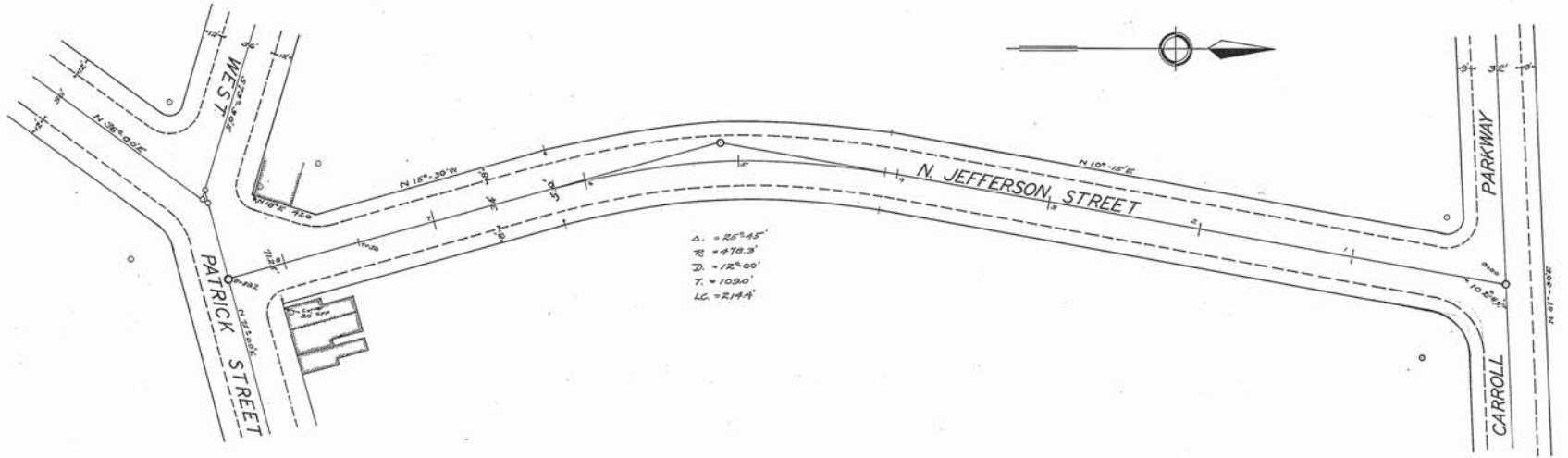
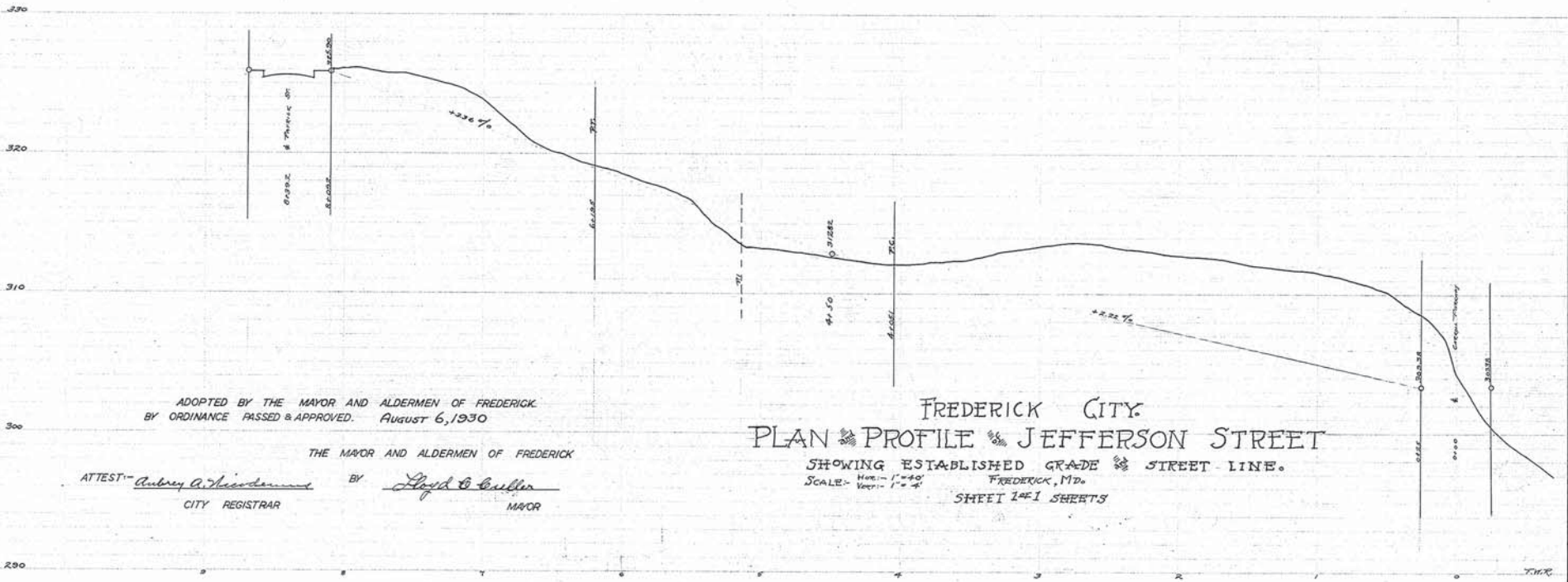


ELMER S. MAXWELL
CITY ENGINEER
FREDERICK, MARYLAND



Δ = 25° 45'
R = 470.3'
D = 12° 00'
T = 109.0'
L.C. = 214.4'



ADOPTED BY THE MAYOR AND ALDERMEN OF FREDERICK
BY ORDINANCE PASSED & APPROVED. August 6, 1930

THE MAYOR AND ALDERMEN OF FREDERICK

ATTEST: *Anthony A. Neiderhiser*
CITY REGISTRAR

BY: *Lydia C. Guller*
MAYOR

FREDERICK CITY
PLAN & PROFILE OF JEFFERSON STREET

SHOWING ESTABLISHED GRADE & STREET LINE.

SCALE: Horiz. 1" = 40'

Vert. 1" = 4'

FREDERICK, MD.

SHEET 1 OF 1 SHEETS