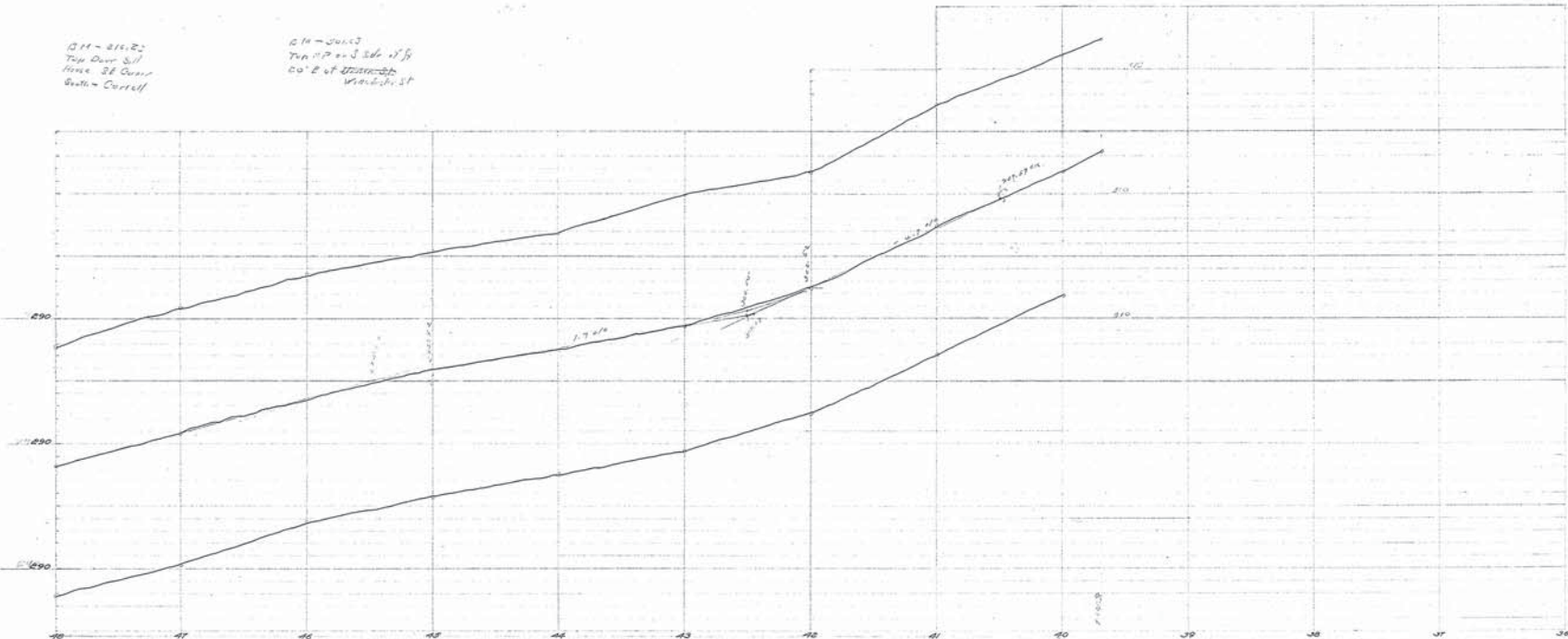
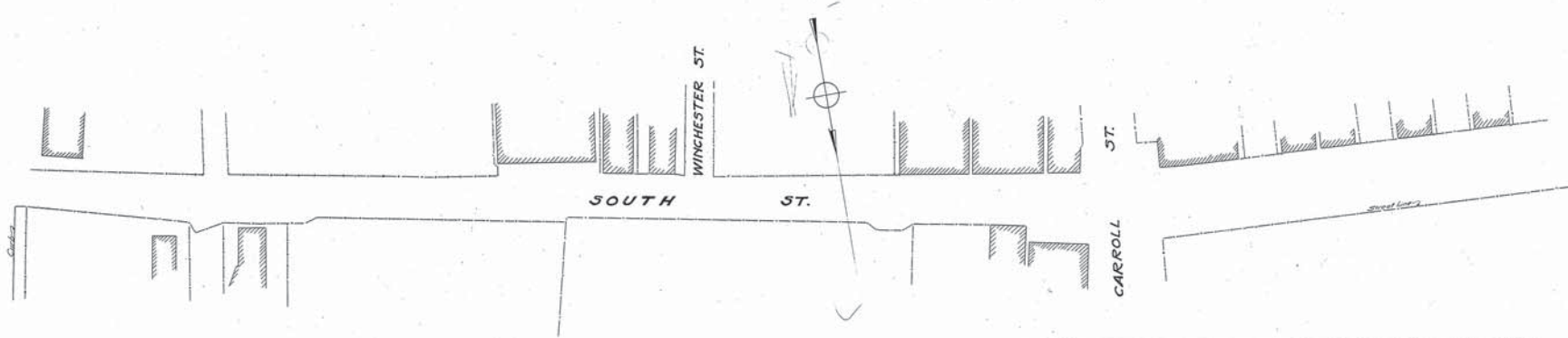


EMERY C. CRUM  
CITY ENGINEER  
FREDERICK, MARYLAND



211-214/22  
Top Over Sill  
House 28 Corner  
South - Carroll

214-204/23  
Top of Sill of 17/5  
Co. 2 of Winchester  
Winchester St.

Adopted by the Mayor and Aldermen of Frederick  
by ordinance passed and approved Sept. 19, 1928

Attest:-  
*Arthur C. Anderson* City Registrar  
By *Lloyd G. Buller* Mayor

FREDERICK CITY  
PLAN & PROFILE OF SOUTH STREET  
SHOWING ESTABLISHED GRADE & STREET LINE  
Scale: 1" = 20' Vert  
1" = 20' Hor  
Frederick, Md.  
Sheet 1 of 4 Sheets

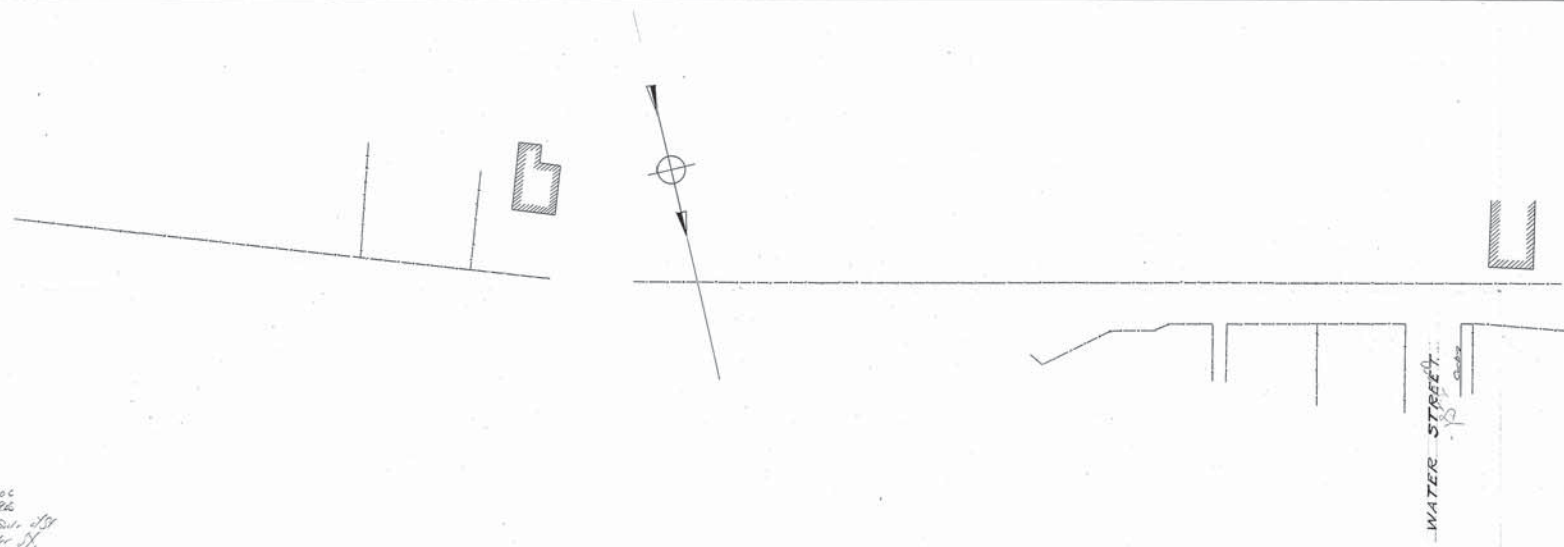
No. 250304  
P. 6-62

250304  
PLAN & PROFILE

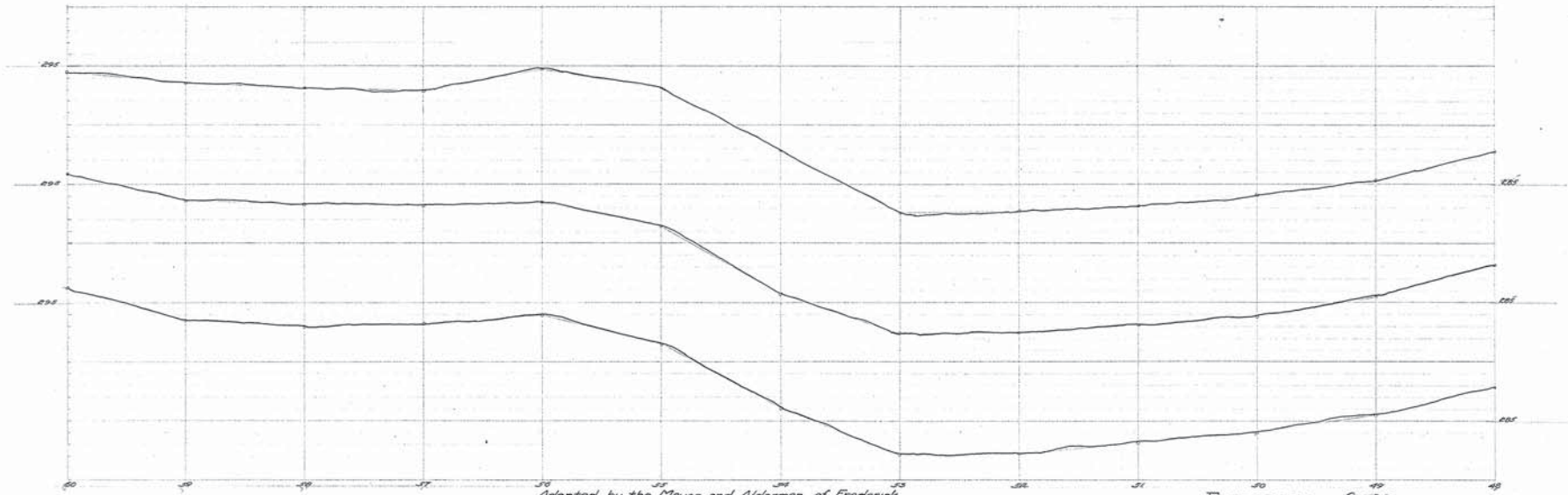
SOUTH STREET

250304-A  
PLAN & PROFILE

ENSEY, C. CRUM  
CITY ENGINEER  
FREDERICK - MARYLAND



SP. 100  
D.M. - 120226  
7th P.P. D. S. L. City  
Opposite Water St.



Adopted by the Mayor and Aldermen of Frederick  
by ordinance passed and approved SEPT. 13, 1928

Attest: *Andrew G. [Signature]* By *John G. [Signature]*  
City Registrar Mayor

FREDERICK CITY  
PLAN & PROFILE of SOUTH STREET  
SHOWING ESTABLISHED GRADE and STREET LINE  
Scale 1" = 40' HORIZ.  
Frederick Md.  
Sheet 2 of 4 Sheets

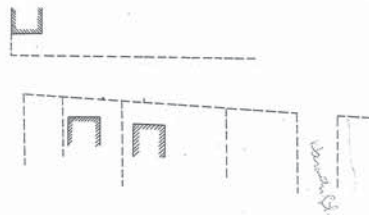
NE 250304-A  
PAGE

SOUTH STREET

250304-B  
PLAN & PROFILE

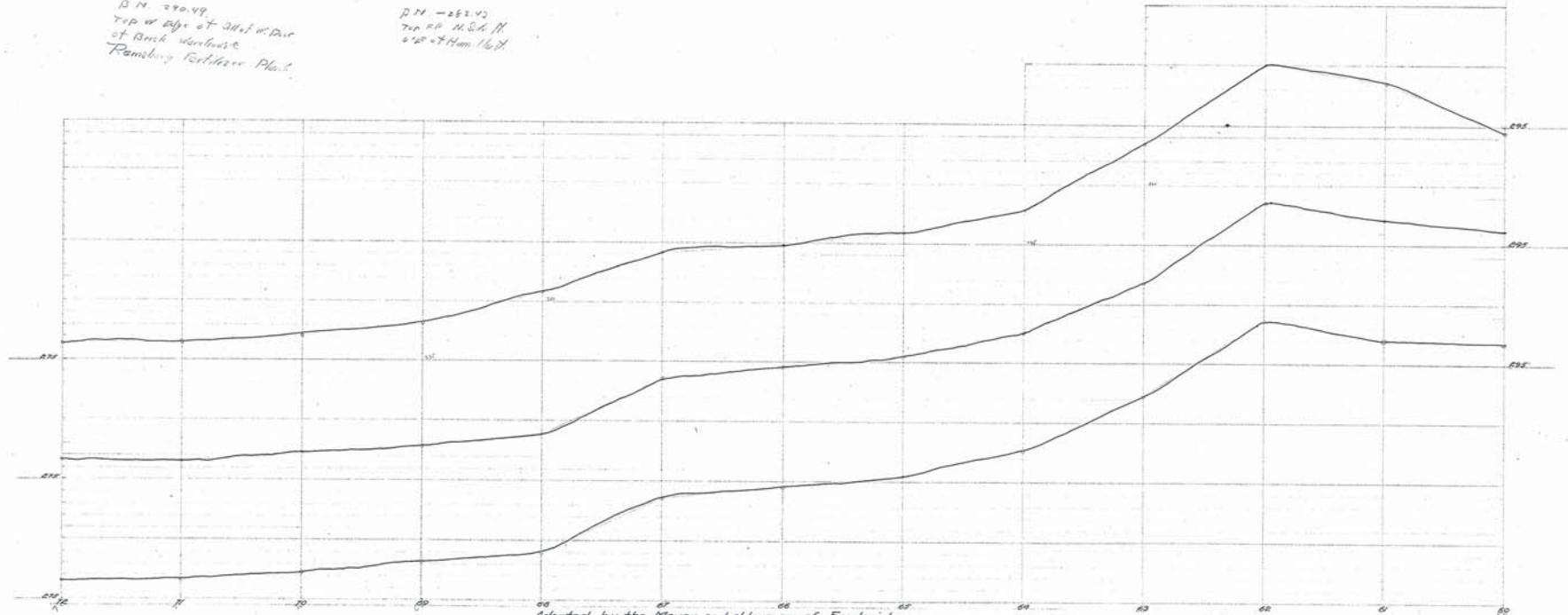
SOUTH STREET

EMERY C. GRUM  
CITY ENGINEER  
FREDERICK - MARYLAND



D.M. 290.49  
Top W. Edge of Shed W. Side  
of Brick Warehouse  
Rambling Fertilizer Plant

D.M. - 262.42  
Top of U.S.S. H.  
6' 10" x 7' 4 1/2" H. Sill

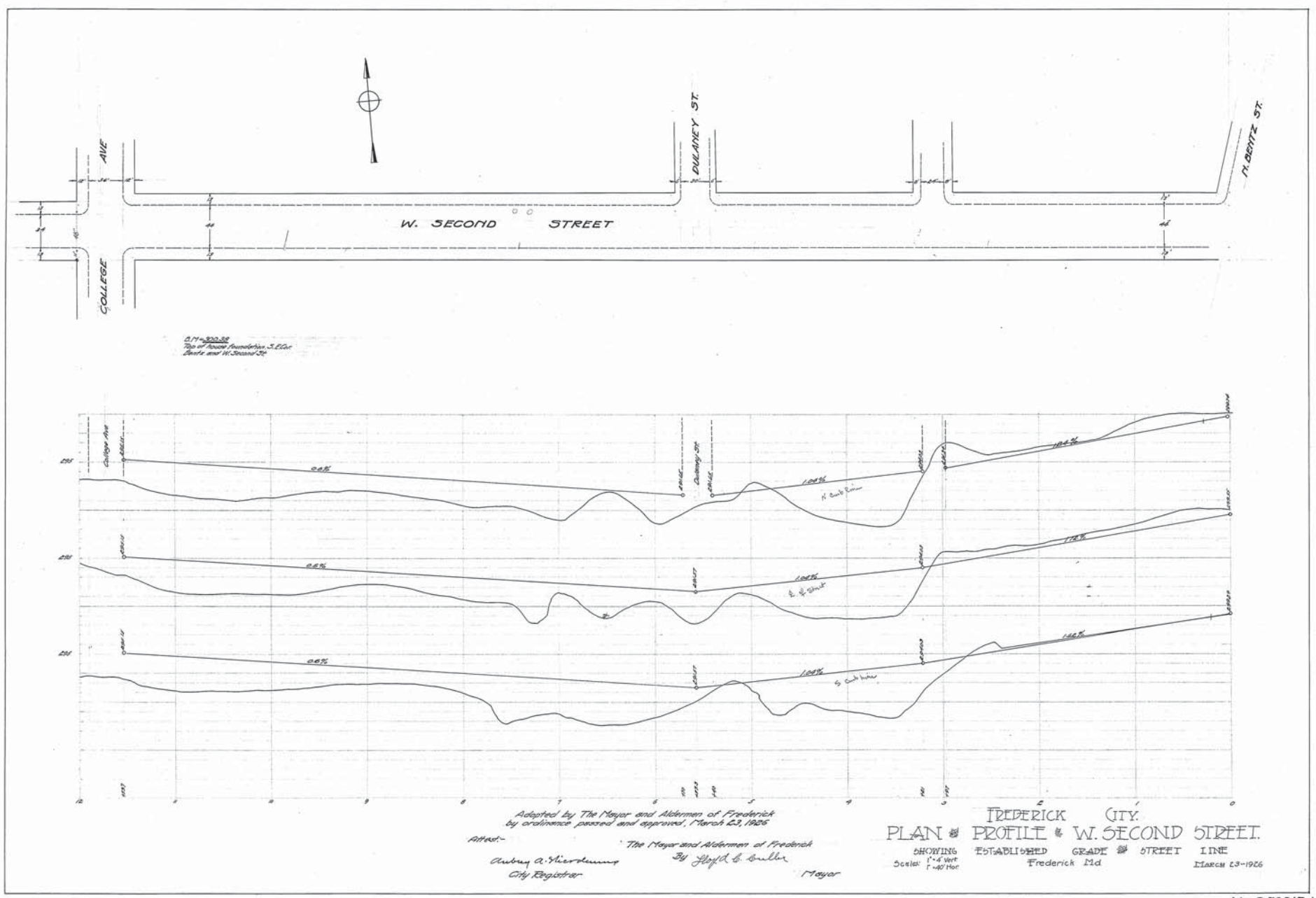


Adopted by the Mayor and Aldermen of Frederick  
by ordinance passed and approved Sept. 19, 1928

The Mayor and Aldermen of Frederick  
Attest: Andrew G. Anderson City Registrar  
By Floyd C. Cullis Mayor

FREDERICK CITY  
PLAN & PROFILE of SOUTH STREET  
SHOWING ESTABLISHED GRADE & STREET LINE  
Frederick - Md.  
Scale: 1" = 40' Vert.  
1" = 100' Hor.  
Sheet 3 of 4 Sheets

250304 — No. 250304-B  
P. 6-28

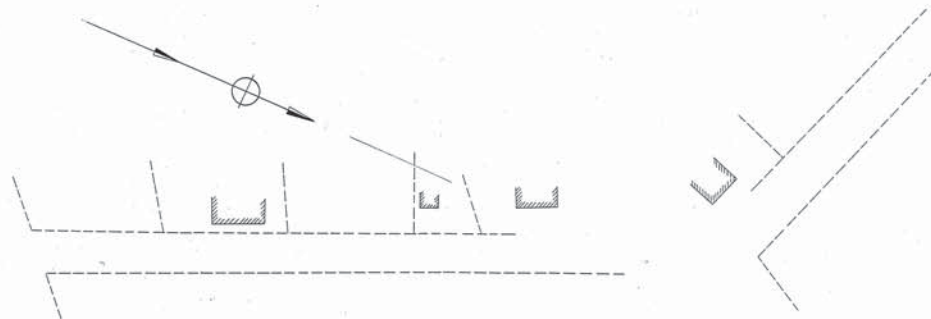


D. 17-200-22  
 Top of Street Foundation S. Edgar  
 Dentz and W. Second St.

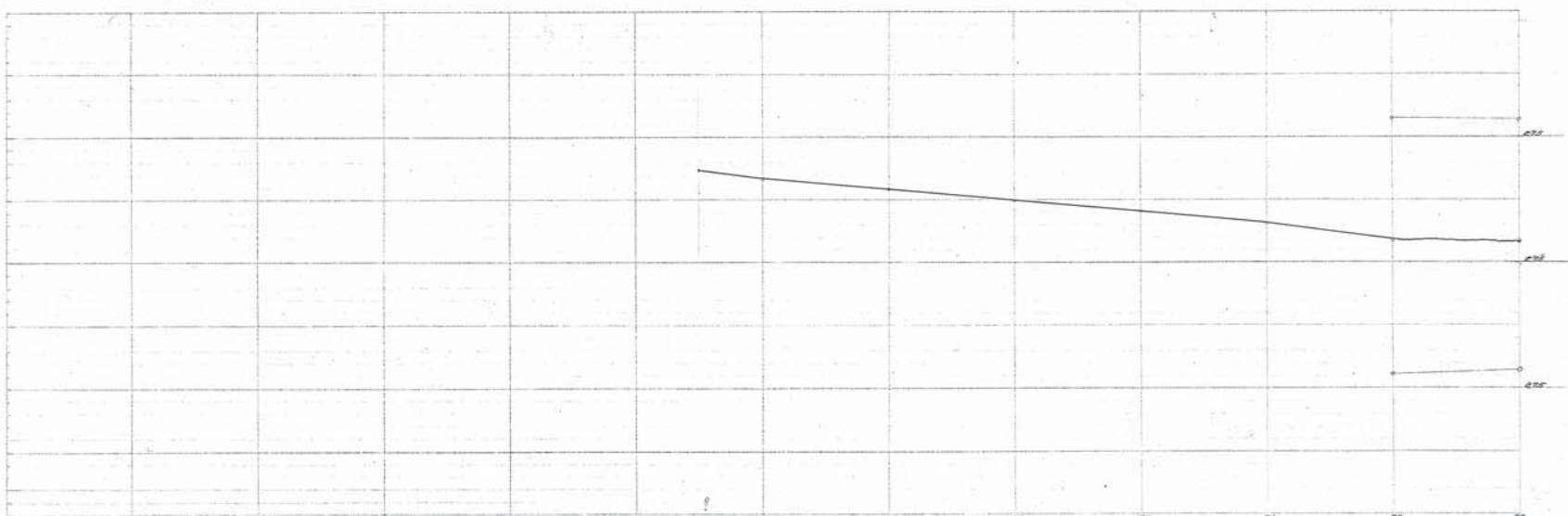
Adopted by The Mayor and Aldermen of Frederick  
 by ordinance passed and approved, March 23, 1926  
 Attest: *Antony A. Hierdening* City Registrar  
 The Mayor and Aldermen of Frederick  
 By *Joseph S. Buller* Mayor

FREDERICK CITY.  
 PLAN & PROFILE OF W. SECOND STREET.  
 SHOWING ESTABLISHED GRADE & STREET LINE.  
 Scale: 1" = 40' Vert  
 1" = 40' Hor  
 Frederick Md. MARCH 23-1926

EMORY C. CRUM  
CITY ENGINEER  
FREDERICK, MARYLAND



22455  
D.M. - 10-10-20  
Top of Hill Conn. P.P.  
at C.C. Hill.



Adopted by the Mayor and Aldermen of Frederick  
by ordinance passed and approved Sept. 15, 1920

Attest: Anthony G. Henderson City Registrar  
The Mayor and Aldermen of Frederick  
By Lloyd C. Guller Mayor

FREDERICK CITY.  
PLAN & PROFILE OF SOUTH STREET.  
SHOWING ESTABLISHED GRADE & STREET LINE.  
Scale: 1" = 40' HORIZ.  
Frederick, Md.  
Sheet 4 of 4 Sheets

NS 250304-C  
P. 4 - P. 2

250304-C  
PLAN & PROFILE

SOUTH STREET